

Anti-RAB20 antibody (115-164 aa) (STJ95287)

GENERAL INFORMATION

Product Type	Primary antibodies
Applications	WB/IHC/IF/ELISA
Host / Source	Rabbit
Reactivity	Human/Rat/Mouse

PRODUCT PROPERTIES

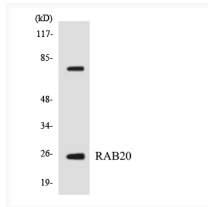
Clonality	Polyclonal
Concentration	1 mg/mL
Conjugation	Unconjugated
Purification	The antibody was affinity-purified from rabbit antiserum by affinity-chromatography using epitope-specific immunogen.
Dilution Range	WB 1:500-1:2000 IHC 1:100-1:300 ELISA 1:10000 IF 1:50-200
Formulation	Liquid in PBS containing 50% Glycerol, 0.5% BSA and 0.02% Sodium Azide.
Isotype	IgG
Molecular Weight	Observed: 28kD
Storage Instruction	Store at -20°C for up to 1 year from the date of receipt, and avoid repeat freeze-thaw cycles.

TARGET INFORMATION

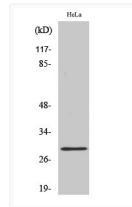
Gene ID	55647
Gene Symbol	RAB20
UniProt ID	RAB20_HUMAN
Immunogen Region	115-164 aa
Specificity	Rab 20 Polyclonal Antibody detects endogenous levels of Rab 20 protein.

ADDITIONAL INFORMATION

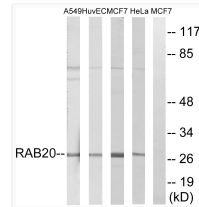
Note **STRICTLY FOR FURTHER SCIENTIFIC RESEARCH USE ONLY (RUO). MUST NOT TO BE USED IN DIAGNOSTIC OR THERAPEUTIC APPLICATIONS.**



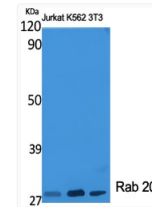
Western blot analysis of the lysates from HeLa cells using RAB20 antibody.



Western blot analysis of A549 cells using Rab 20 Polyclonal Antibody diluted at 1: 2000



Western blot analysis of lysates from HeLa, MCF-7, HUVEC, and A549 cells, using RAB20 Antibody. The lane on the right is blocked with the synthesized peptide.



Western blot analysis of various cells using Rab 20 Polyclonal Antibody diluted at 1: 2000