

## Anti-RAB11B antibody (164-213 aa) (STJ95284)

### GENERAL INFORMATION

Product Type	Primary antibodies
Applications	WB/IHC
Host / Source	Rabbit
Reactivity	Human/Mouse/Rat

### PRODUCT PROPERTIES

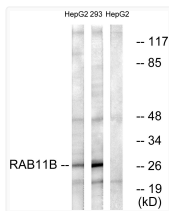
Clonality	Polyclonal
Concentration	1 mg/mL
Conjugation	Unconjugated
Purification	The antibody was affinity-purified from rabbit antiserum by affinity-chromatography using epitope-specific immunogen.
Dilution Range	WB 1:500-2000 IHC-P 1:50-300
Formulation	Liquid in PBS containing 50% Glycerol, 0.5% BSA and 0.02% Sodium Azide.
Isotype	IgG
Molecular Weight	Observed: 28kD
Storage Instruction	Store at -20°C for up to 1 year from the date of receipt, and avoid repeat freeze-thaw cycles.

### TARGET INFORMATION

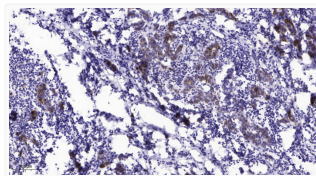
Gene ID	<a href="#">9230</a>
Gene Symbol	<a href="#">RAB11B</a>
UniProt ID	<a href="#">RB11B_HUMAN</a>
Immunogen Region	164-213 aa
Specificity	Rab 11B Polyclonal Antibody detects endogenous levels of Rab 11B protein.

### ADDITIONAL INFORMATION

Note **STRICTLY FOR FURTHER SCIENTIFIC RESEARCH USE ONLY (RUO). MUST NOT TO BE USED IN DIAGNOSTIC OR THERAPEUTIC APPLICATIONS.**



Western blot analysis of lysates from HepG2 and 293 cells, using RAB11B Antibody. The lane on the right was blocked STJ95284



Immunohistochemical analysis of paraffin-embedded human breast cancer. 1, Antibody was diluted at 1:200 (4° overnight). STJ95284