

Anti-RPL10 antibody (1-50 aa) (STJ95281)

GENERAL INFORMATION

Product Type	Primary antibodies
Applications	WB/IHC
Host / Source	Rabbit
Reactivity	Human/Mouse/Rat/Cat

PRODUCT PROPERTIES

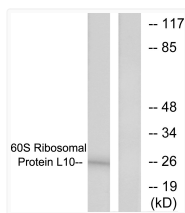
Clonality	Polyclonal
Concentration	1 mg/mL
Conjugation	Unconjugated
Purification	The antibody was affinity-purified from rabbit antiserum by affinity-chromatography using epitope-specific immunogen.
Dilution Range	WB 1:500-2000 IHC-P 1:50-300
Formulation	Liquid in PBS containing 50% Glycerol, 0.5% BSA and 0.02% Sodium Azide.
Isotype	IgG
Molecular Weight	Observed: 25kD
Storage Instruction	Store at -20°C for up to 1 year from the date of receipt, and avoid repeat freeze-thaw cycles.

TARGET INFORMATION

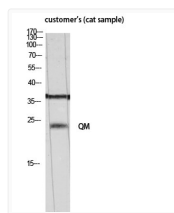
Gene ID	6134
Gene Symbol	RPL10
UniProt ID	RL10_HUMAN
Immunogen Region	1-50 aa
Specificity	QM Polyclonal Antibody detects endogenous levels of QM protein.

ADDITIONAL INFORMATION

Note **STRICTLY FOR FURTHER SCIENTIFIC RESEARCH USE ONLY (RUO). MUST NOT TO BE USED IN DIAGNOSTIC OR THERAPEUTIC APPLICATIONS.**



Western blot analysis of lysates from K562 cells, treated with Insulin 0.01u/ml 15min, using 60S Ribosomal Protein L10 Antibody. The lane on the right is blocked with the synthesized peptide.



Western blot analysis of customer's (cat sample) using QM Polyclonal Antibody diluted at 1: 500