

Anti-PTH1R antibody (145-194 aa) (STJ95263)

GENERAL INFORMATION

Product Type	Primary antibodies
Applications	WB/IHC/IF/ELISA
Host / Source	Rabbit
Reactivity	Human/Mouse/Rat

PRODUCT PROPERTIES

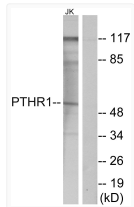
Clonality	Polyclonal
Concentration	1 mg/mL
Conjugation	Unconjugated
Purification	The antibody was affinity-purified from rabbit antiserum by affinity-chromatography using epitope-specific immunogen.
Dilution Range	WB 1:500-1:2000 IHC 1:100-1:300 IF 1:200-1:1000 ELISA 1:10000
Formulation	Liquid in PBS containing 50% Glycerol, 0.5% BSA and 0.02% Sodium Azide.
Isotype	IgG
Molecular Weight	Observed: 52kD
Storage Instruction	Store at -20°C for up to 1 year from the date of receipt, and avoid repeat freeze-thaw cycles.

TARGET INFORMATION

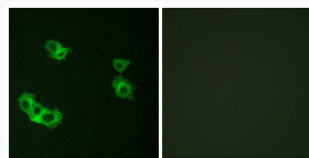
Gene ID	5745
Gene Symbol	PTH1R
UniProt ID	PTH1R_HUMAN
Immunogen Region	145-194 aa
Specificity	PTH/PTHrP-R Polyclonal Antibody detects endogenous levels of PTH/PTHrP-R protein.

ADDITIONAL INFORMATION

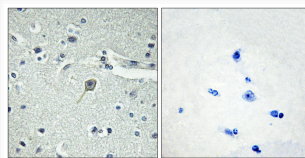
Note **STRICTLY FOR FURTHER SCIENTIFIC RESEARCH USE ONLY (RUO). MUST NOT TO BE USED IN DIAGNOSTIC OR THERAPEUTIC APPLICATIONS.**



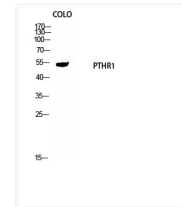
Western blot analysis of lysates from Jurkat cells, using PTHR1 Antibody. The lane on the right is blocked with the synthesized peptide.



Immunofluorescence analysis of MCF7 cells, using PTHR1 Antibody. The picture on the right is blocked with the synthesized peptide.



Immunohistochemistry analysis of paraffin-embedded human brain tissue, using PTHR1 Antibody. The picture on the right is blocked with the synthesized peptide.



Western blot analysis of COLO cells using PTH/PTHrP-R Polyclonal Antibody diluted at 1:1000