

Anti-PSMD11 antibody (271-320 aa) (STJ95251)

GENERAL INFORMATION

Product Type	Primary antibodies
Applications	WB/IHC/IF/ELISA
Host / Source	Rabbit
Reactivity	Human/Mouse

PRODUCT PROPERTIES

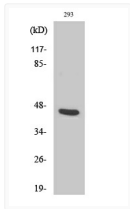
Clonality	Polyclonal
Concentration	1 mg/mL
Conjugation	Unconjugated
Purification	The antibody was affinity-purified from rabbit antiserum by affinity-chromatography using epitope-specific immunogen.
Dilution Range	WB 1:500-1:2000 IHC 1:100-1:300 ELISA 1:10000 IF 1:50-200
Formulation	Liquid in PBS containing 50% Glycerol, 0.5% BSA and 0.02% Sodium Azide.
Isotype	IgG
Molecular Weight	Observed: 42kD
Storage Instruction	Store at -20°C for up to 1 year from the date of receipt, and avoid repeat freeze-thaw cycles.

TARGET INFORMATION

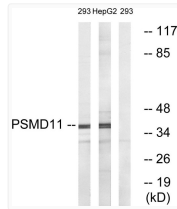
Gene ID	5717
Gene Symbol	PSMD11
UniProt ID	PSD11_HUMAN
Immunogen Region	271-320 aa
Specificity	PSMD11 Polyclonal Antibody detects endogenous levels of PSMD11 protein.

ADDITIONAL INFORMATION

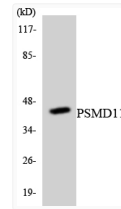
Note STRICTLY FOR FURTHER SCIENTIFIC RESEARCH USE ONLY (RUO). MUST NOT TO BE USED IN DIAGNOSTIC OR THERAPEUTIC APPLICATIONS.



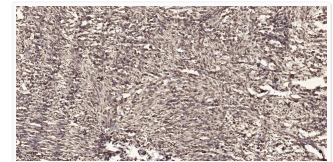
Western blot analysis of various cells using PSMD11 polyclonal antibody STJ95251



Western blot analysis of lysates from 293 and HepG2 cells, using PSMD11 Antibody. The lane on the right was blocked STJ95251



Western blot analysis of the lysates from RAW264.7 cells using PSMD11 antibody. STJ95251



Immunohistochemical analysis of paraffin-embedded human small intestinal carcinoma tissue. 1, Primary antibody was STJ95251