

Anti-OR51E2 antibody (221-270 aa) (STJ95246)

GENERAL INFORMATION

Product Type	Primary antibodies
Applications	WB/ELISA/IHC
Host / Source	Rabbit
Reactivity	Human/Rat

PRODUCT PROPERTIES

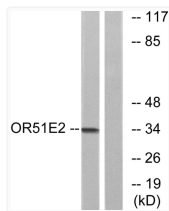
Clonality	Polyclonal
Concentration	1 mg/mL
Conjugation	Unconjugated
Purification	The antibody was affinity-purified from rabbit antiserum by affinity-chromatography using epitope-specific immunogen.
Dilution Range	WB 1:500-2000 IHC-P 1:50-300 ELISA 2000-20000
Formulation	Liquid in PBS containing 50% Glycerol, 0.5% BSA and 0.02% Sodium Azide.
Isotype	IgG
Molecular Weight	Observed: 35kD
Storage Instruction	Store at -20°C for up to 1 year from the date of receipt, and avoid repeat freeze-thaw cycles.

TARGET INFORMATION

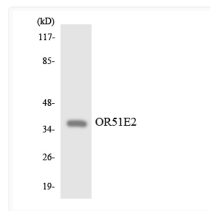
Gene ID	81285
Gene Symbol	OR51E2
UniProt ID	O51E2_HUMAN
Immunogen Region	221-270 aa
Specificity	PSGR Polyclonal Antibody detects endogenous levels of PSGR protein.

ADDITIONAL INFORMATION

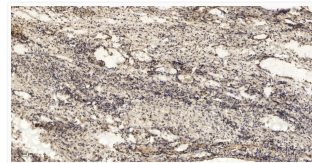
Note STRICTLY FOR FURTHER SCIENTIFIC RESEARCH USE ONLY (RUO). MUST NOT TO BE USED IN DIAGNOSTIC OR THERAPEUTIC APPLICATIONS.



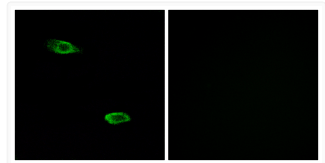
Western blot analysis of lysates from Jurkat cells, using OR51E2 Antibody. The lane on the right was blocked with the STJ95246



Western blot analysis of the lysates from HepG2 cells using OR51E2 antibody. STJ95246



Immunohistochemical analysis of paraffin-embedded human oophoroma. 1, Antibody was diluted at 1:200 (4° overnight). 2, STJ95246



Immunofluorescence analysis of A549 cells using OR51E2 Antibody. The picture on the right is blocked with the STJ95246