

Anti-PPP2R3C antibody (165-214 aa) (STJ95206)

GENERAL INFORMATION

Product Type	Primary antibodies
Applications	WB/ELISA/IHC
Host / Source	Rabbit
Reactivity	Human/Mouse/Rat

PRODUCT PROPERTIES

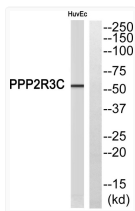
Clonality	Polyclonal
Concentration	1 mg/mL
Conjugation	Unconjugated
Purification	The antibody was affinity-purified from rabbit antiserum by affinity-chromatography using epitope-specific immunogen.
Dilution Range	WB 1:500-2000 IHC-P 1:50-300 ELISA 2000-20000
Formulation	Liquid in PBS containing 50% Glycerol, 0.5% BSA and 0.02% Sodium Azide.
Isotype	IgG
Molecular Weight	Observed: 55kD
Storage Instruction	Store at -20°C for up to 1 year from the date of receipt, and avoid repeat freeze-thaw cycles.

TARGET INFORMATION

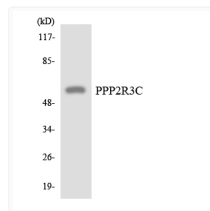
Gene ID	55012
Gene Symbol	PPP2R3C
UniProt ID	P2R3C_HUMAN
Immunogen Region	165-214 aa
Specificity	PPP2R3C Polyclonal Antibody detects endogenous levels of PPP2R3C protein.

ADDITIONAL INFORMATION

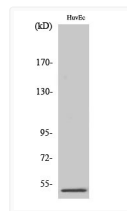
Note **STRICTLY FOR FURTHER SCIENTIFIC RESEARCH USE ONLY (RUO). MUST NOT TO BE USED IN DIAGNOSTIC OR THERAPEUTIC APPLICATIONS.**



Western blot analysis of PPP2R3C Antibody. The lane on the right is blocked with the PPP2R3C peptide.



Western blot analysis of the lysates from HepG2 cells using PPP2R3C antibody.



Western blot analysis of various cells using PPP2R3C Polyclonal Antibody.