

Anti-PPP1R1C antibody (5-54 aa) (STJ95203)

GENERAL INFORMATION

Product Type	Primary antibodies
Applications	IHC/IF/ELISA
Host / Source	Rabbit
Reactivity	Human/Mouse

PRODUCT PROPERTIES

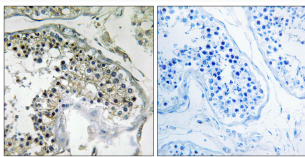
Clonality	Polyclonal
Concentration	1 mg/mL
Conjugation	Unconjugated
Purification	The antibody was affinity-purified from rabbit antiserum by affinity-chromatography using epitope-specific immunogen.
Dilution Range	IHC 1:100-1:300 ELISA 1:10000 IF 1:50-200
Formulation	Liquid in PBS containing 50% Glycerol, 0.5% BSA and 0.02% Sodium Azide.
Isotype	IgG
Molecular Weight	Calculated: 12kD
Storage Instruction	Store at -20°C for up to 1 year from the date of receipt, and avoid repeat freeze-thaw cycles.

TARGET INFORMATION

Gene ID	151242
Gene Symbol	PPP1R1C
UniProt ID	PPR1C_HUMAN
Immunogen Region	5-54 aa
Specificity	PPP1R1C Polyclonal Antibody detects endogenous levels of PPP1R1C protein.

ADDITIONAL INFORMATION

Note STRICTLY FOR FURTHER SCIENTIFIC RESEARCH USE ONLY (RUO). MUST NOT TO BE USED IN DIAGNOSTIC OR THERAPEUTIC APPLICATIONS.



Immunohistochemistry analysis of paraffin-embedded human testis tissue, using PPP1R1C Antibody. The picture on the right is blocked with the synthesized peptide.