

Anti-PPP2CA antibody (260-309 aa) (STJ95195)

GENERAL INFORMATION

Product Type	Primary antibodies
Applications	WB/IHC/IF/ELISA
Host / Source	Rabbit
Reactivity	Human/Mouse/Rat

PRODUCT PROPERTIES

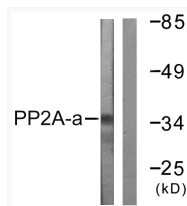
Clonality	Polyclonal
Concentration	1 mg/mL
Conjugation	Unconjugated
Purification	The antibody was affinity-purified from rabbit antiserum by affinity-chromatography using epitope-specific immunogen.
Dilution Range	WB 1:500-1:2000 IHC 1:100-1:300 IF 1:200-1:1000 ELISA 1:5000
Formulation	Liquid in PBS containing 50% Glycerol, 0.5% BSA and 0.02% Sodium Azide.
Isotype	IgG
Molecular Weight	Observed: 35kD
Storage Instruction	Store at -20°C for up to 1 year from the date of receipt, and avoid repeat freeze-thaw cycles.

TARGET INFORMATION

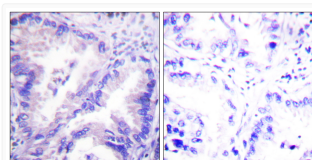
Gene ID	5515
Gene Symbol	PPP2CA
UniProt ID	PP2AA_HUMAN
Immunogen Region	260-309 aa
Specificity	PP2A-C Alpha Polyclonal Antibody detects endogenous levels of PP2A-C Alpha protein.

ADDITIONAL INFORMATION

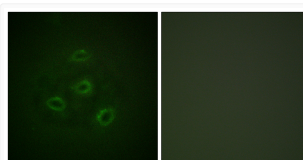
Note **STRICTLY FOR FURTHER SCIENTIFIC RESEARCH USE ONLY (RUO). MUST NOT TO BE USED IN DIAGNOSTIC OR THERAPEUTIC APPLICATIONS.**



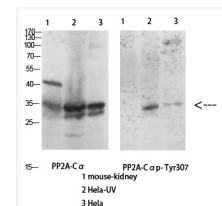
Western blot analysis of lysates from A549 cells, using PP2A-alpha Antibody. The lane on the right is blocked with the synthesized peptide.



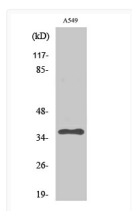
Immunohistochemistry analysis of paraffin-embedded human lung carcinoma tissue, using PP2A-alpha Antibody. The picture on the right is blocked with the synthesized peptide.



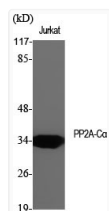
Immunofluorescence analysis of HepG2 cells, using PP2A-alpha Antibody. The picture on the right is blocked with the synthesized peptide.



Western blot analysis of various cells using Antibody diluted at 1:1000. Secondary antibody was diluted at 1:20000



Western blot analysis of A549 cells using PP2A-C Alpha Polyclonal Antibody diluted at 1: 2000



Western blot analysis of various cells using PP2A-C Alpha Polyclonal Antibody diluted at 1: 2000