

## Anti-PKC antibody (623-672 aa) (STJ95117)

### GENERAL INFORMATION

|               |                    |
|---------------|--------------------|
| Product Type  | Primary antibodies |
| Applications  | WB/IHC/IF/ELISA    |
| Host / Source | Rabbit             |
| Reactivity    | Human/Mouse/Rat    |

### PRODUCT PROPERTIES

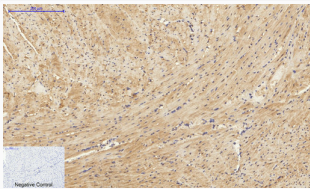
|                     |   |
|---------------------|---|
| Clonality           | Polyclonal  |
| Concentration       | 1 mg/mL   |
| Conjugation         | Unconjugated  |
| Purification        | The antibody was affinity-purified from rabbit antiserum by affinity-chromatography using epitope-specific immunogen. |
| Dilution Range      | WB 1:500-1:2000<br>IHC 1:100-1:300<br>IF 1:200-1:1000<br>ELISA 1:5000   |
| Formulation         | Liquid in PBS containing 50% Glycerol, 0.5% BSA and 0.02% Sodium Azide.   |
| Isotype             | IgG   |
| Molecular Weight    | Observed: 67-83kD ( Alpha 76, Delta/Beta 77, Gamma 78, Theta/Epsilon 83, Zeta 67 )                                    |
| Storage Instruction | Store at -20°C for up to 1 year from the date of receipt, and avoid repeat freeze-thaw cycles.                        |

### TARGET INFORMATION

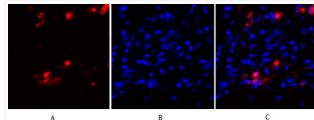
|                  |  |
|------------------|--|
| Gene ID          | <a href="#">5581</a><br><a href="#">5580</a><br><a href="#">5582</a><br><a href="#">PRKCE</a><br><a href="#">PRKCD</a><br><a href="#">KPCE_HUMAN</a><br><a href="#">KPCD_HUMAN</a><br><a href="#">KPCG_HUMAN</a> |
| Immunogen Region | 623-672 aa   |
| Specificity      | PKC Polyclonal Antibody detects endogenous levels of PKC protein.  |

### ADDITIONAL INFORMATION

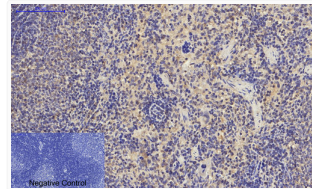
Note STRICTLY FOR FURTHER SCIENTIFIC RESEARCH USE ONLY (RUO). MUST NOT TO BE USED IN DIAGNOSTIC OR THERAPEUTIC APPLICATIONS.



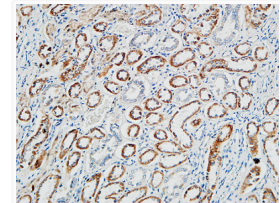
Immunohistochemical analysis of paraffin-embedded Mouse-heart tissue. 1, PKC Polyclonal Antibody was diluted at 1:200 (4°C, overnight). 2, Sodium citrate pH 6.0 was used for antibody retrieval (>98°C, 20min). 3, Secondary antibody was diluted at 1:200 (room temperature, 30min). Negative control was used by secondary antibody only.



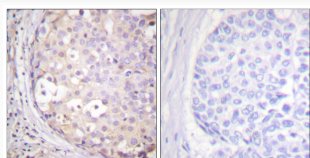
Immunofluorescence analysis of human-liver tissue. 1, PKC Polyclonal Antibody (red) was diluted at 1:200 (4°C, overnight). 2, Cy3 labeled Secondary antibody was diluted at 1:300 (room temperature, 50min). 3, Picture B: DAPI (blue) 10min. Picture A: Target. Picture B: DAPI. Picture C: merge of A+B



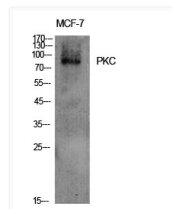
Immunohistochemical analysis of paraffin-embedded Rat-spleen tissue. 1, PKC Polyclonal Antibody was diluted at 1:200 (4°C, overnight). 2, Sodium citrate pH 6.0 was used for antibody retrieval (>98°C, 20min). 3, Secondary antibody was diluted at 1:200 (room temperature, 30min). Negative control was used by secondary antibody only.



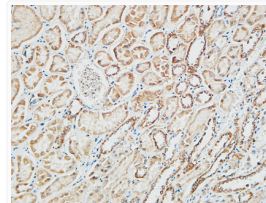
Immunohistochemical analysis of paraffin-embedded Human Right kidney. 1, Antibody was diluted at 1:200 (4°C, overnight). 2, High-pressure and temperature EDTA, pH8.0 was used for antigen retrieval. 3, Secondary antibody was diluted at 1:200 (room temperature, 30min). Negative control was used by secondary antibody only.



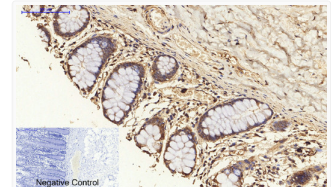
Immunohistochemistry analysis of paraffin-embedded human breast carcinoma tissue, using PKC-pan Antibody. The picture on the right is blocked with the synthesized peptide.



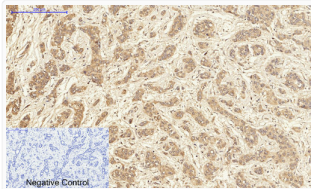
Western blot analysis of various cells using PKC Polyclonal Antibody diluted at 1:2000



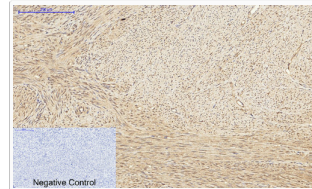
Immunohistochemical analysis of paraffin-embedded Human Right kidney. 1, Antibody was diluted at 1:200 (4°C, overnight). 2, High-pressure and temperature EDTA, pH8.0 was used for antigen retrieval. 3, Secondary antibody was diluted at 1:200 (room temperature, 30min). Negative control was used by secondary antibody only.



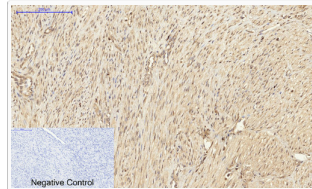
Immunohistochemical analysis of paraffin-embedded Human-colon tissue. 1, PKC Polyclonal Antibody was diluted at 1:200 (4°C, overnight). 2, Sodium citrate pH 6.0 was used for antibody retrieval (>98°C, 20min). 3, Secondary antibody was diluted at 1:200 (room temperature, 30min). Negative control was used by secondary antibody only.



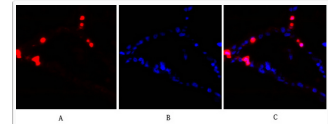
Immunohistochemical analysis of paraffin-embedded Human-liver-cancer tissue. 1, PKC Polyclonal Antibody was diluted at 1:200 (4°C, overnight). 2, Sodium citrate pH 6.0 was used for antibody retrieval (>98°C, 20min). 3, Secondary antibody was diluted at 1:200 (room temperature, 30min). Negative control was used by secondary antibody only.



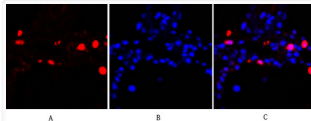
Immunohistochemical analysis of paraffin-embedded Human-uterus tissue. 1, PKC Polyclonal Antibody was diluted at 1:200 (4°C, overnight). 2, Sodium citrate pH 6.0 was used for antibody retrieval (>98°C, 20min). 3, Secondary antibody was diluted at 1:200 (room temperature, 30min). Negative control was used by secondary antibody only.



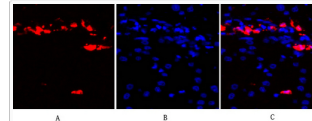
Immunohistochemical analysis of paraffin-embedded Human-uterus-cancer tissue. 1, PKC Polyclonal Antibody was diluted at 1:200 (4°C, overnight). 2, Sodium citrate pH 6.0 was used for antibody retrieval (>98°C, 20min). 3, Secondary antibody was diluted at 1:200 (room temperature, 30min). Negative control was used by secondary antibody only.



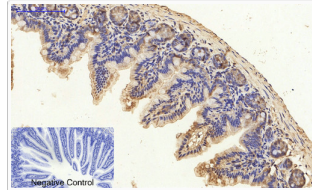
Immunofluorescence analysis of human-lung tissue. 1, PKC Polyclonal Antibody (red) was diluted at 1:200 (4°C, overnight). 2, Cy3 labeled Secondary antibody was diluted at 1:300 (room temperature, 50min). 3, Picture B: DAPI (blue) 10min. Picture A:Target. Picture B: DAPI. Picture C: merge of A+B



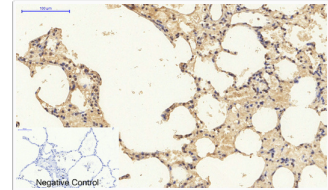
Immunofluorescence analysis of human-lung tissue. 1, PKC Polyclonal Antibody (red) was diluted at 1:200 (4°C, overnight). 2, Cy3 labeled Secondary antibody was diluted at 1:300 (room temperature, 50min). 3, Picture B: DAPI (blue) 10min. Picture A:Target. Picture B: DAPI. Picture C: merge of A+B



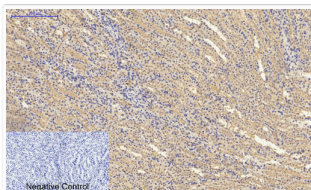
Immunofluorescence analysis of human-liver tissue. 1, PKC Polyclonal Antibody (red) was diluted at 1:200 (4°C, overnight). 2, Cy3 labeled Secondary antibody was diluted at 1:300 (room temperature, 50min). 3, Picture B: DAPI (blue) 10min. Picture A:Target. Picture B: DAPI. Picture C: merge of A+B



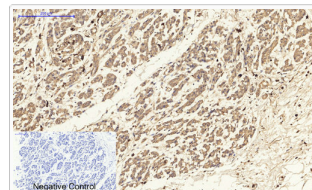
Immunohistochemical analysis of paraffin-embedded Mouse-colon tissue. 1, PKC Polyclonal Antibody was diluted at 1:200 (4°C, overnight). 2, Sodium citrate pH 6.0 was used for antibody retrieval (>98°C, 20min). 3, Secondary antibody was diluted at 1:200 (room temperature, 30min). Negative control was used by secondary antibody only.



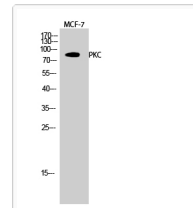
Immunohistochemical analysis of paraffin-embedded Human-lung tissue. 1, PKC Polyclonal Antibody was diluted at 1:200 (4°C, overnight). 2, Sodium citrate pH 6.0 was used for antibody retrieval (>98°C, 20min). 3, Secondary antibody was diluted at 1:200 (room temperature, 30min). Negative control was used by secondary antibody only.



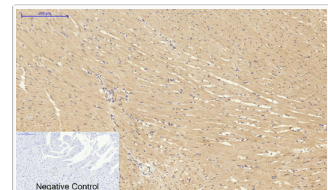
Immunohistochemical analysis of paraffin-embedded Mouse-kidney tissue. 1, PKC Polyclonal Antibody was diluted at 1:200 (4°C, overnight). 2, Sodium citrate pH 6.0 was used for antibody retrieval (>98°C, 20min). 3, Secondary antibody was diluted at 1:200 (room temperature, 30min). Negative control was used by secondary antibody only.



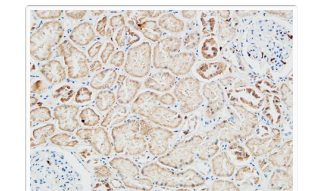
Immunohistochemical analysis of paraffin-embedded Human-stomach-cancer tissue. 1, PKC Polyclonal Antibody was diluted at 1:200 (4°C, overnight). 2, Sodium citrate pH 6.0 was used for antibody retrieval (>98°C, 20min). 3, Secondary antibody was diluted at 1:200 (room temperature, 30min). Negative control was used by secondary antibody only.



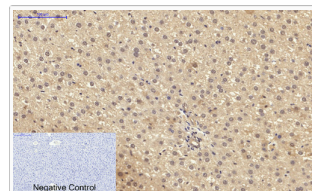
Western blot analysis of MCF-7 cells using PKC Polyclonal Antibody diluted at 1: 2000



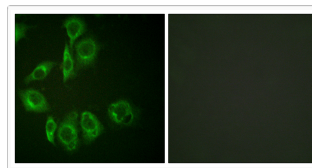
Immunohistochemical analysis of paraffin-embedded Rat-heart tissue. 1, PKC Polyclonal Antibody was diluted at 1:200 (4°C, overnight). 2, Sodium citrate pH 6.0 was used for antibody retrieval (>98°C, 20min). 3, Secondary antibody was diluted at 1:200 (room temperature, 30min). Negative control was used by secondary antibody only.



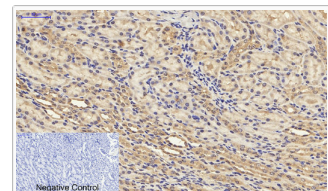
Immunohistochemical analysis of paraffin-embedded Human Right kidney. 1, Antibody was diluted at 1:100 (4°C overnight). 2, High-pressure and temperature EDTA, pH8.0 was used for antigen retrieval. 3, Secondary antibody was diluted at 1:200 (room temperature, 30min).



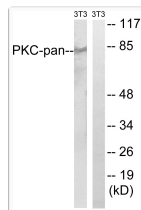
Immunohistochemical analysis of paraffin-embedded Rat-liver tissue. 1, PKC Polyclonal Antibody was diluted at 1:200 (4°C, overnight). 2, Sodium citrate pH 6.0 was used for antibody retrieval (>98°C, 20min). 3, Secondary antibody was diluted at 1:200 (room temperature, 30min). Negative control was used by secondary antibody only.



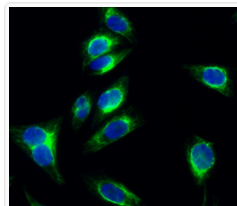
Immunofluorescence analysis of HUVEC cells, using PKC-pan Antibody. The picture on the right is blocked with the synthesized peptide.



Immunohistochemical analysis of paraffin-embedded Rat-kidney tissue. 1, PKC Polyclonal Antibody was diluted at 1:200 (4°C, overnight). 2, Sodium citrate pH 6.0 was used for antibody retrieval (>98°C, 20min). 3, Secondary antibody was diluted at 1:200 (room temperature, 30min). Negative control was used by secondary antibody only.



Western blot analysis of lysates from NIH/3T3 cells, treated with PMA 250ng/ml 15', using PKC-pan Antibody. The lane on the right is blocked with the synthesized peptide.



Immunofluorescence analysis of HeLa cell. 1, PKC Polyclonal Antibody (green) was diluted at 1:200 (4°C overnight). 2, Goat Anti Rabbit Alexa Fluor 488 Catalog: (NA was diluted at 1:1000 (room temperature, 50min). 3 DAPI (blue) 10min.