

Anti-PKA Alpha/Beta/Gamma cat antibody (166-215 aa) (STJ95114)

GENERAL INFORMATION

Product Type	Primary antibodies
Applications	WB/IHC/IF/ELISA
Host / Source	Rabbit
Reactivity	Human/Mouse/Rat/Pig

PRODUCT PROPERTIES

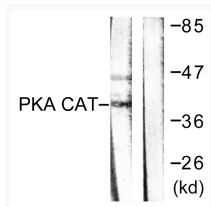
Clonality	Polyclonal
Concentration	1 mg/mL
Conjugation	Unconjugated
Purification	The antibody was affinity-purified from rabbit antiserum by affinity-chromatography using epitope-specific immunogen.
Dilution Range	WB 1:500-1:2000 IHC 1:100-1:300 IF 1:200-1:1000 ELISA 1:20000
Formulation	Liquid in PBS containing 50% Glycerol, 0.5% BSA and 0.02% Sodium Azide.
Isotype	IgG
Molecular Weight	Observed: 40kD
Storage Instruction	Store at -20°C for up to 1 year from the date of receipt, and avoid repeat freeze-thaw cycles.

TARGET INFORMATION

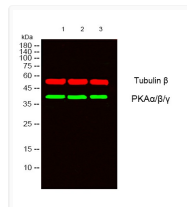
Gene ID	5567 5568 5566 PRKACB PRKACG KAPCB_HUMAN KAPCG_HUMAN KAPCA_HUMAN
Immunogen Region	166-215 aa
Specificity	PKA Alpha/Beta/Gamma cat Polyclonal Antibody detects endogenous levels of PKA Alpha/Beta/Gamma cat protein.

ADDITIONAL INFORMATION

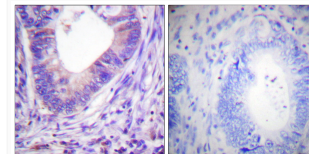
Note STRICTLY FOR FURTHER SCIENTIFIC RESEARCH USE ONLY (RUO). MUST NOT TO BE USED IN DIAGNOSTIC OR THERAPEUTIC APPLICATIONS.



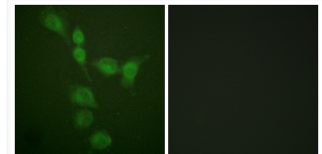
Western blot analysis of lysates from mouse brain, using PKA alpha/beta CAT Antibody. The lane on the right is blocked with the synthesized peptide.



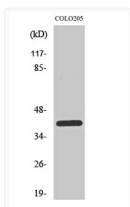
Western blot analysis of lysates from 1) 22RV1, 2) HeLa, 3) COLO205 cells, (Green) primary antibody was diluted at 1:1000, 4°C over night, secondary antibody (cat: (NA) was diluted at 1:10000, 37°C 1hour. (Red) Tubulin Beta monoclonal antibody (5G3) (cat: (STJ96932) antibody was diluted at 1:5000 as loading control, 4°C over night, secondary antibody (cat: (NA) was diluted at 1:10000, 37°C 1hour.



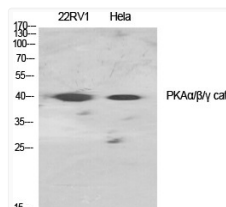
Immunohistochemistry analysis of paraffin-embedded human colon carcinoma tissue, using PKA alpha/beta CAT Antibody. The picture on the right is blocked with the synthesized peptide.



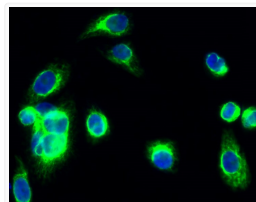
Immunofluorescence analysis of A549 cells, using PKA alpha/beta CAT Antibody. The picture on the right is blocked with the synthesized peptide.



Western blot analysis of COLO205 cells using PKA Alpha/Beta/Gamma cat Polyclonal Antibody diluted at 1: 1000



Western blot analysis of various cells using PKA Alpha/Beta/Gamma cat Polyclonal Antibody diluted at 1: 1000



Immunofluorescence analysis of HeLa cell. 1, PKA Alpha/Beta/Gamma cat Polyclonal Antibody (green) was diluted at 1:200 (4°C overnight). 2, Goat Anti Rabbit Alexa Fluor 488 Catalog: (NA) was diluted at 1:1000 (room temperature, 50min). 3 DAPI (blue) 10min.