

## Anti-PHAX antibody (141-190 aa) (STJ95061)

### GENERAL INFORMATION

Product Type	Primary antibodies
Applications	WB/ELISA/IHC
Host / Source	Rabbit
Reactivity	Human/Rat/Mouse

### PRODUCT PROPERTIES

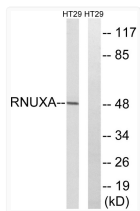
Clonality	Polyclonal
Concentration	1 mg/mL
Conjugation	Unconjugated
Purification	The antibody was affinity-purified from rabbit antiserum by affinity-chromatography using epitope-specific immunogen.
Dilution Range	WB 1:500-2000 IHC-P 1:50-300 ELISA 2000-20000
Formulation	Liquid in PBS containing 50% Glycerol, 0.5% BSA and 0.02% Sodium Azide.
Isotype	IgG
Molecular Weight	Observed: 48kD
Storage Instruction	Store at -20°C for up to 1 year from the date of receipt, and avoid repeat freeze-thaw cycles.

### TARGET INFORMATION

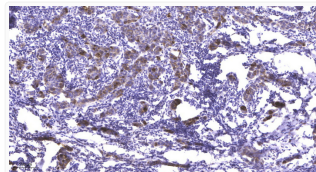
Gene ID	<a href="#">51808</a>
Gene Symbol	<a href="#">PHAX</a>
UniProt ID	<a href="#">PHAX_HUMAN</a>
Immunogen Region	141-190 aa
Specificity	PHAX Polyclonal Antibody detects endogenous levels of PHAX protein.

### ADDITIONAL INFORMATION

Note STRICTLY FOR FURTHER SCIENTIFIC RESEARCH USE ONLY (RUO). MUST NOT TO BE USED IN DIAGNOSTIC OR THERAPEUTIC APPLICATIONS.



Western blot analysis of lysates from HT-29 cells, using RNUXA Antibody. The lane on the right was blocked with the STJ95061



Immunohistochemical analysis of paraffin-embedded human breast cancer. 1. Antibody was diluted at 1:200 (4° overnight). STJ95061