

Anti-PTGES antibody (30-79 aa) (STJ95054)

GENERAL INFORMATION

Product Type	Primary antibodies
Applications	WB/ELISA/IHC
Host / Source	Rabbit
Reactivity	Human/Mouse/Rat

PRODUCT PROPERTIES

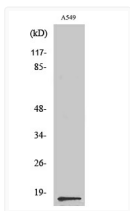
Clonality	Polyclonal
Concentration	1 mg/mL
Conjugation	Unconjugated
Purification	The antibody was affinity-purified from rabbit antiserum by affinity-chromatography using epitope-specific immunogen.
Dilution Range	WB 1:500-2000 IHC-P 1:50-300 ELISA 2000-20000
Formulation	Liquid in PBS containing 50% Glycerol, 0.5% BSA and 0.02% Sodium Azide.
Isotype	IgG
Molecular Weight	Observed: 17kD
Storage Instruction	Store at -20°C for up to 1 year from the date of receipt, and avoid repeat freeze-thaw cycles.

TARGET INFORMATION

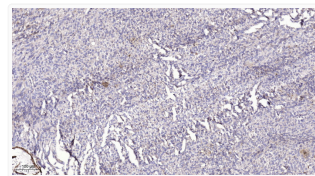
Gene ID	9536
Gene Symbol	PTGES
UniProt ID	PTGES_HUMAN
Immunogen Region	30-79 aa
Specificity	PGE synthase Polyclonal Antibody detects endogenous levels of PGE synthase protein.

ADDITIONAL INFORMATION

Note STRICTLY FOR FURTHER SCIENTIFIC RESEARCH USE ONLY (RUO). MUST NOT TO BE USED IN DIAGNOSTIC OR THERAPEUTIC APPLICATIONS.



Western blot analysis of various cells using PGE synthase polyclonal antibody diluted at 1:500 using PGE synthase antibody. STJ95054



Immunohistochemical analysis of paraffin-embedded human colon cancer. 1. Antibody was diluted at 1:200 (4° overnight). STJ95054