

## Anti-PFKFB1 antibody (406-455 aa) (STJ95048)

### GENERAL INFORMATION

Product Type	Primary antibodies
Applications	WB/IHC/IF/ELISA
Host / Source	Rabbit
Reactivity	Human/Mouse/Rat

### PRODUCT PROPERTIES

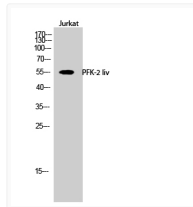
Clonality	Polyclonal
Concentration	1 mg/mL
Conjugation	Unconjugated
Purification	The antibody was affinity-purified from rabbit antiserum by affinity-chromatography using epitope-specific immunogen.
Dilution Range	WB 1:500-1:2000 IHC 1:100-1:300 ELISA 1:5000 IF 1:50-200
Formulation	Liquid in PBS containing 50% Glycerol, 0.5% BSA and 0.02% Sodium Azide.
Isotype	IgG
Molecular Weight	Observed: 58kD
Storage Instruction	Store at -20°C for up to 1 year from the date of receipt, and avoid repeat freeze-thaw cycles.

### TARGET INFORMATION

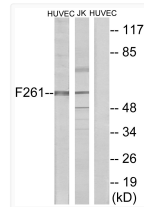
Gene ID	<a href="#">5207</a>
Gene Symbol	<a href="#">PFKFB1</a>
UniProt ID	<a href="#">F261_HUMAN</a>
Immunogen Region	406-455 aa
Specificity	PFK-2 liv Polyclonal Antibody detects endogenous levels of PFK-2 liv protein.

### ADDITIONAL INFORMATION

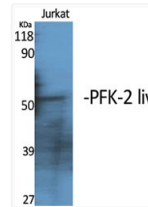
Note **STRICTLY FOR FURTHER SCIENTIFIC RESEARCH USE ONLY (RUO). MUST NOT TO BE USED IN DIAGNOSTIC OR THERAPEUTIC APPLICATIONS.**



Western blot analysis of Jurkat cells using PFK-2 liv Polyclonal Antibody



Western blot analysis of lysates from HUVEC cells and Jurkat cells, using PFKFB1 Antibody. The lane on the right is blocked with the synthesized peptide.



Western blot analysis of various cells using PFK-2 liv Polyclonal Antibody