

Anti-PEG3 antibody (1031-1080 aa) (STJ95024)

GENERAL INFORMATION

Product Type	Primary antibodies
Applications	WB/IHC
Host / Source	Rabbit
Reactivity	Human/Rat/Mouse

PRODUCT PROPERTIES

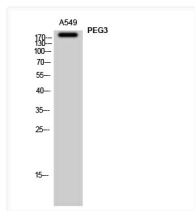
Clonality	Polyclonal
Concentration	1 mg/mL
Conjugation	Unconjugated
Purification	The antibody was affinity-purified from rabbit antiserum by affinity-chromatography using epitope-specific immunogen.
Dilution Range	WB 1:500-2000 IHC-P 1:50-300
Formulation	Liquid in PBS containing 50% Glycerol, 0.5% BSA and 0.02% Sodium Azide.
Isotype	IgG
Molecular Weight	Observed: 181kD
Storage Instruction	Store at -20°C for up to 1 year from the date of receipt, and avoid repeat freeze-thaw cycles.

TARGET INFORMATION

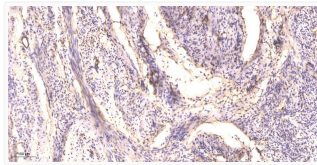
Gene ID	5178
Gene Symbol	PEG3
UniProt ID	PEG3_HUMAN
Immunogen Region	1031-1080 aa
Specificity	PEG3 Polyclonal Antibody detects endogenous levels of PEG3 protein.

ADDITIONAL INFORMATION

Note **STRICTLY FOR FURTHER SCIENTIFIC RESEARCH USE ONLY (RUO). MUST NOT TO BE USED IN DIAGNOSTIC OR THERAPEUTIC APPLICATIONS.**



Western Blot analysis of A549 cells using PEG3 Polyclonal Antibody STJ95024



Immunohistochemical analysis of paraffin-embedded human cervical carcinoma. 1. Antibody was diluted at 1:200 (4° STJ95024)