

Anti-PC antibody (357-406 aa) (STJ94981)

GENERAL INFORMATION

Product Type	Primary antibodies
Applications	WB/IHC/IF/ELISA
Host / Source	Rabbit
Reactivity	Human/Mouse/Rat

PRODUCT PROPERTIES

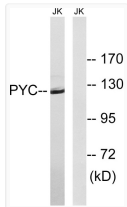
Clonality	Polyclonal
Concentration	1 mg/mL
Conjugation	Unconjugated
Purification	The antibody was affinity-purified from rabbit antiserum by affinity-chromatography using epitope-specific immunogen.
Dilution Range	WB 1:500-1:2000 IHC-P 1:100-300 ELISA 1:20000 IF 1:100-300
Formulation	Liquid in PBS containing 50% Glycerol, 0.5% BSA and 0.02% Sodium Azide.
Isotype	IgG
Molecular Weight	Observed: 120kD
Storage Instruction	Store at -20°C for up to 1 year from the date of receipt, and avoid repeat freeze-thaw cycles.

TARGET INFORMATION

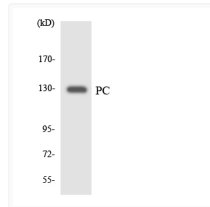
Gene ID	5091
Gene Symbol	PC
UniProt ID	PYC_HUMAN
Immunogen Region	357-406 aa
Specificity	PCB Polyclonal Antibody detects endogenous levels of PCB protein.

ADDITIONAL INFORMATION

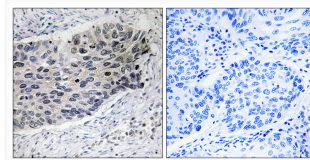
Note **STRICTLY FOR FURTHER SCIENTIFIC RESEARCH USE ONLY (RUO). MUST NOT TO BE USED IN DIAGNOSTIC OR THERAPEUTIC APPLICATIONS.**



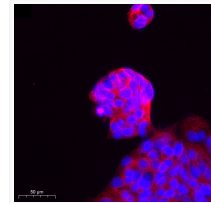
Western blot analysis of lysates from Jurkat cells, using PC Antibody. The lane on the right was blocked with the STJ94981



Western blot analysis of the lysates from HT-29 cells using a PC antibody. STJ94981



Immunohistochemistry analysis of paraffin-embedded human lung carcinoma tissue using PC Antibody. The picture on the STJ94981



Immunofluorescence analysis of SiHa cells. 1, Primary antibody was diluted at 1:100 (4°C overnight). 2, Goat Anti Rabbit STJ94981