

Anti-PAK Alpha/Beta/Gamma antibody (391-440 aa) (STJ94943)

GENERAL INFORMATION

Product Type	Primary antibodies
Applications	WB/IHC/IF/ELISA
Host / Source	Rabbit
Reactivity	Human/Mouse/Rat

PRODUCT PROPERTIES

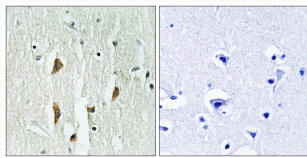
Clonality	Polyclonal
Concentration	1 mg/mL
Conjugation	Unconjugated
Purification	The antibody was affinity-purified from rabbit antiserum by affinity-chromatography using epitope-specific immunogen.
Dilution Range	WB 1:500-1:2000 IHC 1:100-1:300 ELISA 1:20000 IF 1:50-200
Formulation	Liquid in PBS containing 50% Glycerol, 0.5% BSA and 0.02% Sodium Azide.
Isotype	IgG
Molecular Weight	Observed: 62kD
Storage Instruction	Store at -20°C for up to 1 year from the date of receipt, and avoid repeat freeze-thaw cycles.

TARGET INFORMATION

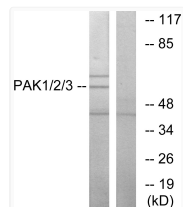
Gene ID	5058 5062 5063 PAK1 PAK2 PAK1_HUMAN PAK2_HUMAN PAK3_HUMAN
Immunogen Region	391-440 aa
Specificity	PAK Alpha/Beta/Gamma Polyclonal Antibody detects endogenous levels of PAK Alpha/Beta/Gamma protein.

ADDITIONAL INFORMATION

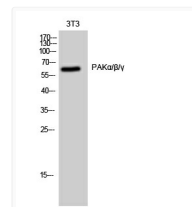
Note STRICTLY FOR FURTHER SCIENTIFIC RESEARCH USE ONLY (RUO). MUST NOT TO BE USED IN DIAGNOSTIC OR THERAPEUTIC APPLICATIONS.



Immunohistochemistry analysis of paraffin-embedded human brain tissue, using PAK1/2/3 Antibody. The picture on the right is blocked with the synthesized peptide.



Western blot analysis of lysates from NIH/3T3 cells, using PAK1/2/3 Antibody. The lane on the right is blocked with the synthesized peptide.



Western blot analysis of 3T3 cells using PAK Alpha/Beta/Gamma Polyclonal Antibody. The lane on the right is blocked with the synthesized peptide.