

## Anti-PAK5/6 antibody (566-615 aa) (STJ94939)

### GENERAL INFORMATION

Product Type	Primary antibodies
Applications	WB/ELISA
Host / Source	Rabbit
Reactivity	Human/Mouse

### PRODUCT PROPERTIES

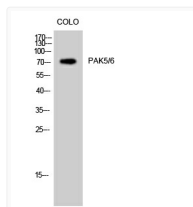
Clonality	Polyclonal
Concentration	1 mg/mL
Conjugation	Unconjugated
Purification	The antibody was affinity-purified from rabbit antiserum by affinity-chromatography using epitope-specific immunogen.
Dilution Range	WB 1:500-1:2000 ELISA 1:40000
Formulation	Liquid in PBS containing 50% Glycerol, 0.5% BSA and 0.02% Sodium Azide.
Isotype	IgG
Molecular Weight	Observed: 75kD
Storage Instruction	Store at -20°C for up to 1 year from the date of receipt, and avoid repeat freeze-thaw cycles.

### TARGET INFORMATION

Gene ID	<a href="#">106821730/5692457144</a>
Gene Symbol	<a href="#">PAK6</a> <a href="#">PAK5</a>
UniProt ID	<a href="#">PAK6_HUMAN</a> <a href="#">PAK5_HUMAN</a>
Immunogen Region	566-615 aa
Specificity	PAK5/6 Polyclonal Antibody detects endogenous levels of PAK5/6 protein.

### ADDITIONAL INFORMATION

Note STRICTLY FOR FURTHER SCIENTIFIC RESEARCH USE ONLY (RUO). MUST NOT TO BE USED IN DIAGNOSTIC OR THERAPEUTIC APPLICATIONS.



Western blot analysis of COLO cells using PAK5/6 Polyclonal Antibody