

## Anti-CDKN1B antibody (149-198 aa) (STJ94866)

### GENERAL INFORMATION

|               |                     |
|---------------|---------------------|
| Product Type  | Primary antibodies  |
| Applications  | WB/IHC/IF/ELISA     |
| Host / Source | Rabbit              |
| Reactivity    | Human/Rat/Mouse/Cow |

### PRODUCT PROPERTIES

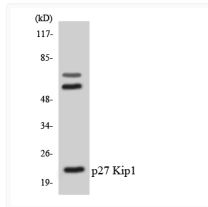
|                     |   |
|---------------------|---|
| Clonality           | Polyclonal  |
| Concentration       | 1 mg/mL   |
| Conjugation         | Unconjugated  |
| Purification        | The antibody was affinity-purified from rabbit antiserum by affinity-chromatography using epitope-specific immunogen. |
| Dilution Range      | WB 1:500-2000<br>ELISA 1:10000-20000<br>IHC 1:50-300<br>IF 1:50-200   |
| Formulation         | Liquid in PBS containing 50% Glycerol, 0.5% BSA and 0.02% Sodium Azide.   |
| Isotype             | IgG   |
| Molecular Weight    | Observed: 27kD  |
| Storage Instruction | Store at -20°C for up to 1 year from the date of receipt, and avoid repeat freeze-thaw cycles.                        |

### TARGET INFORMATION

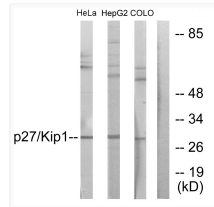
|                  |   |
|------------------|---|
| Gene ID          | <a href="#">1027</a>  |
| Gene Symbol      | <a href="#">CDKN1B</a>  |
| UniProt ID       | <a href="#">CDN1B_HUMAN</a>                                       |
| Immunogen Region | 149-198 aa  |
| Specificity      | p27 Polyclonal Antibody detects endogenous levels of p27 protein. |

### ADDITIONAL INFORMATION

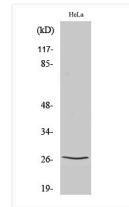
Note STRICTLY FOR FURTHER SCIENTIFIC RESEARCH USE ONLY (RUO). MUST NOT TO BE USED IN DIAGNOSTIC OR THERAPEUTIC APPLICATIONS.



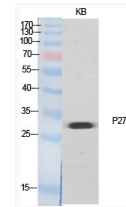
Western blot analysis of the lysates from Jurkat cells using p27 Kip1 antibody.



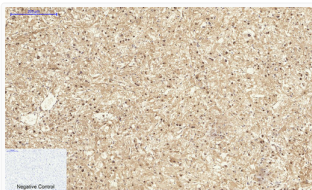
Western blot analysis of lysates from HeLa, HepG2, and COLO205 cells, using p27 Kip1 Antibody. The lane on the right is blocked with the synthesized peptide.



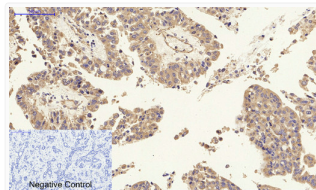
Western blot analysis of COLO205 cells using p27 Polyclonal Antibody diluted at 1 : 500



Western blot analysis of various cells using p27 Polyclonal Antibody diluted at 1 : 500



Immunohistochemical analysis of paraffin-embedded Human-kidney-cancer tissue. 1, p27 Polyclonal Antibody was diluted at 1:200 (4°C, overnight). 2, Sodium citrate pH 6.0 was used for antibody retrieval (>98°C, 20min). 3, Secondary antibody was diluted at 1:200 (room temperature, 30min). Negative control was used by secondary antibody only.



Immunohistochemical analysis of paraffin-embedded Human-liver-cancer tissue. 1, p27 Polyclonal Antibody was diluted at 1:200 (4°C, overnight). 2, Sodium citrate pH 6.0 was used for antibody retrieval (>98°C, 20min). 3, Secondary antibody was diluted at 1:200 (room temperature, 30min). Negative control was used by secondary antibody only.