

## Anti-ARHGEF17 antibody (431-480 aa) (STJ94859)

### GENERAL INFORMATION

Product Type	Primary antibodies
Applications	IHC/IF/ELISA
Host / Source	Rabbit
Reactivity	Human/Mouse

### PRODUCT PROPERTIES

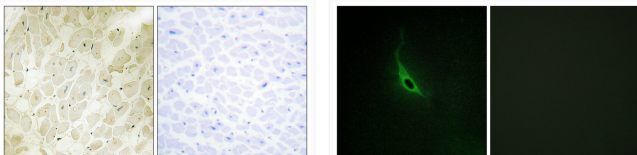
Clonality	Polyclonal
Concentration	1 mg/mL
Conjugation	Unconjugated
Purification	The antibody was affinity-purified from rabbit antiserum by affinity-chromatography using epitope-specific immunogen.
Dilution Range	IHC 1:100-1:300 IF 1:200-1:1000 ELISA 1:5000
Formulation	Liquid in PBS containing 50% Glycerol, 0.5% BSA and 0.02% Sodium Azide.
Isotype	IgG
Molecular Weight	Calculated: 222kD
Storage Instruction	Store at -20°C for up to 1 year from the date of receipt, and avoid repeat freeze-thaw cycles.

### TARGET INFORMATION

Gene ID	<a href="#">9828</a>
Gene Symbol	<a href="#">ARHGEF17</a>
UniProt ID	<a href="#">ARHGH_HUMAN</a>
Immunogen Region	431-480 aa
Specificity	p164-RhoGEF Polyclonal Antibody detects endogenous levels of p164-RhoGEF protein.

### ADDITIONAL INFORMATION

Note STRICTLY FOR FURTHER SCIENTIFIC RESEARCH USE ONLY (RUO). MUST NOT TO BE USED IN DIAGNOSTIC OR THERAPEUTIC APPLICATIONS.



Immunohistochemical analysis of paraffin-human heart. 1, Antibody was diluted at 1:200 (4°C overnight). 2, TRIS-EDTA of pH8.0 was used for antigen retrieval. 3, Secondary antibody was diluted at 1:200 (room temperature, 30min). The picture on the right is blocked with the synthesized peptide.

Immunofluorescence analysis of HepG2 cells, using CARD6 Antibody diluted at 1:50. The picture on the right is blocked with the synthesized peptide.