

Anti-OR5W2 antibody (158-207) (STJ94786)

GENERAL INFORMATION

Product Type	Primary antibodies
Applications	WB/IF/ELISA
Host / Source	Rabbit
Reactivity	Human/Rat/Mouse

PRODUCT PROPERTIES

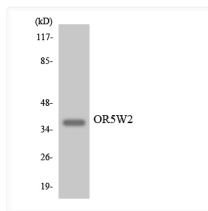
Clonality	Polyclonal
Concentration	1 mg/mL
Conjugation	Unconjugated
Purification	The antibody was affinity-purified from rabbit antiserum by affinity-chromatography using epitope-specific immunogen.
Dilution Range	WB 1:500-1:2000 IF 1:200-1:1000 ELISA 1:20000
Formulation	Liquid in PBS containing 50% Glycerol, 0.5% BSA and 0.02% Sodium Azide.
Isotype	IgG
Molecular Weight	Observed: 34kD
Storage Instruction	Store at -20°C for up to 1 year from the date of receipt, and avoid repeat freeze-thaw cycles.

TARGET INFORMATION

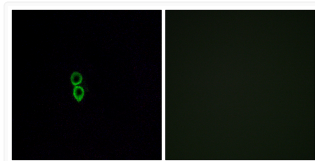
Gene ID	390148
Gene Symbol	OR5W2
UniProt ID	OR5W2_HUMAN
Immunogen Region	158-207
Specificity	Olfactory receptor 5W2 Polyclonal Antibody detects endogenous levels of Olfactory receptor 5W2 protein.

ADDITIONAL INFORMATION

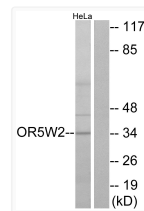
Note STRICTLY FOR FURTHER SCIENTIFIC RESEARCH USE ONLY (RUO). MUST NOT TO BE USED IN DIAGNOSTIC OR THERAPEUTIC APPLICATIONS.



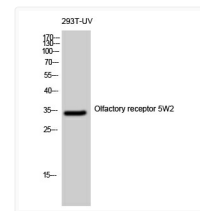
Western blot analysis of the lysates from 293 cells using OR5W2 antibody.



Immunofluorescence analysis of A549 cells, using OR5W2 Antibody. The picture on the right is blocked with the synthesized peptide.



Western blot analysis of lysates from HeLa cells, using OR5W2 Antibody. The lane on the right is blocked with the synthesized peptide.



Western blot analysis of 293T-UV cells using Olfactory receptor 5W2 Polyclonal Antibody diluted at 1 : 500