

Anti-OR5M3 antibody (53-102) (STJ94779)

GENERAL INFORMATION

| | |
|---------------|--------------------|
| Product Type | Primary antibodies |
| Applications | WB/IF/ELISA |
| Host / Source | Rabbit |
| Reactivity | Human/Rat/Mouse |

PRODUCT PROPERTIES

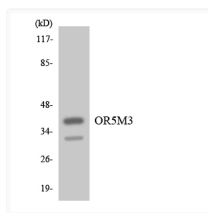
| | |
|---------------------|---|
| Clonality | Polyclonal |
| Concentration | 1 mg/mL |
| Conjugation | Unconjugated |
| Purification | The antibody was affinity-purified from rabbit antiserum by affinity-chromatography using epitope-specific immunogen. |
| Dilution Range | WB 1:500-1:2000 IF 1:200-1:1000 ELISA 1:5000 |
| Formulation | Liquid in PBS containing 50% Glycerol, 0.5% BSA and 0.02% Sodium Azide. |
| Isotype | IgG |
| Molecular Weight | Observed: 35kD |
| Storage Instruction | Store at -20°C for up to 1 year from the date of receipt, and avoid repeat freeze-thaw cycles. |

TARGET INFORMATION

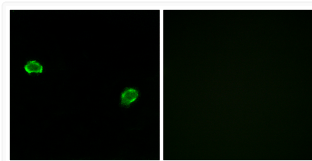
| | |
|------------------|---|
| Gene ID | 219482 |
| Gene Symbol | OR5M3 |
| UniProt ID | OR5M3_HUMAN |
| Immunogen Region | 53-102 |
| Specificity | Olfactory receptor 5M3 Polyclonal Antibody detects endogenous levels of Olfactory receptor 5M3 protein. |

ADDITIONAL INFORMATION

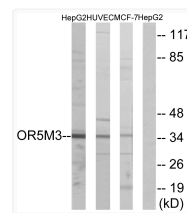
Note STRICTLY FOR FURTHER SCIENTIFIC RESEARCH USE ONLY (RUO). MUST NOT TO BE USED IN DIAGNOSTIC OR THERAPEUTIC APPLICATIONS.



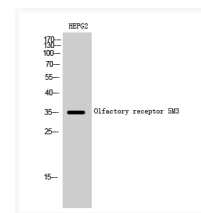
Western blot analysis of the lysates from COLO205 cells using OR5M3 antibody.



Immunofluorescence analysis of MCF7 cells, using OR5M3 Antibody. The picture on the right is blocked with the synthesized peptide.



Western blot analysis of lysates from HepG2, HUVEC, and MCF-7 cells, using OR5M3 Antibody. The lane on the right is blocked with the synthesized peptide.



Western blot analysis of HEPG2 cells using Olfactory receptor 5M3 Polyclonal Antibody diluted at 1 : 1000