

Anti-OR5L1/OR5L2 antibody (55-104) (STJ94775)

GENERAL INFORMATION

Product Type	Primary antibodies
Applications	IF/ELISA
Host / Source	Rabbit
Reactivity	Human/Rat/Mouse

PRODUCT PROPERTIES

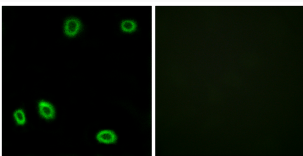
Clonality	Polyclonal
Concentration	1 mg/mL
Conjugation	Unconjugated
Purification	The antibody was affinity-purified from rabbit antiserum by affinity-chromatography using epitope-specific immunogen.
Dilution Range	IF 1:200-1:1000 ELISA 1:5000
Formulation	Liquid in PBS containing 50% Glycerol, 0.5% BSA and 0.02% Sodium Azide.
Isotype	IgG
Molecular Weight	Calculated: 35kD
Storage Instruction	Store at -20°C for up to 1 year from the date of receipt, and avoid repeat freeze-thaw cycles.

TARGET INFORMATION

Gene ID	219437 26338
Gene Symbol	OR5L1 OR5L2
UniProt ID	OR5L1_HUMAN OR5L2_HUMAN
Immunogen Region	55-104
Specificity	Olfactory receptor 5L1/2 Polyclonal Antibody detects endogenous levels of Olfactory receptor 5L1/2 protein.

ADDITIONAL INFORMATION

Note STRICTLY FOR FURTHER SCIENTIFIC RESEARCH USE ONLY (RUO). MUST NOT TO BE USED IN DIAGNOSTIC OR THERAPEUTIC APPLICATIONS.



Immunofluorescence analysis of HUVEC cells, using OR5L1/2 Antibody. The picture on the right is blocked with the synthesized peptide.