

Anti-OR52D1 antibody (269-318) (STJ94742)

GENERAL INFORMATION

Product Type	Primary antibodies
Applications	WB/IF/ELISA
Host / Source	Rabbit
Reactivity	Human/Monkey

PRODUCT PROPERTIES

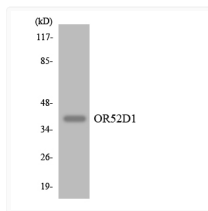
Clonality	Polyclonal
Concentration	1 mg/mL
Conjugation	Unconjugated
Purification	The antibody was affinity-purified from rabbit antiserum by affinity-chromatography using epitope-specific immunogen.
Dilution Range	WB 1:500-1:2000 IF 1:200-1:1000 ELISA 1:5000
Formulation	Liquid in PBS containing 50% Glycerol, 0.5% BSA and 0.02% Sodium Azide.
Isotype	IgG
Molecular Weight	Observed: 35kD
Storage Instruction	Store at -20°C for up to 1 year from the date of receipt, and avoid repeat freeze-thaw cycles.

TARGET INFORMATION

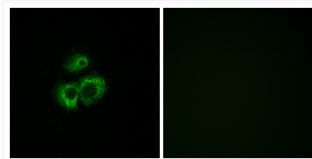
Gene ID	390066
Gene Symbol	OR52D1
UniProt ID	O52D1_HUMAN
Immunogen Region	269-318
Specificity	Olfactory receptor 52D1 Polyclonal Antibody detects endogenous levels of Olfactory receptor 52D1 protein.

ADDITIONAL INFORMATION

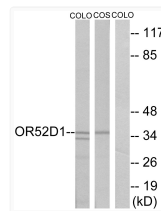
Note **STRICTLY FOR FURTHER SCIENTIFIC RESEARCH USE ONLY (RUO). MUST NOT TO BE USED IN DIAGNOSTIC OR THERAPEUTIC APPLICATIONS.**



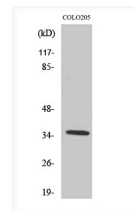
Western blot analysis of the lysates from HepG2 cells using OR52D1 antibody.



Immunofluorescence analysis of MCF7 cells, using OR52D1 Antibody. The picture on the right is blocked with the synthesized peptide.



Western blot analysis of lysates from COLO and COS7 cells, using OR52D1 Antibody. The lane on the right is blocked with the synthesized peptide.



Western blot analysis of various cells using Olfactory receptor 52D1 Polyclonal Antibody the right is blocked with the synthesized peptide.