

## Anti-OR4L1 antibody (262-311) (STJ94716)

### GENERAL INFORMATION

Product Type	Primary antibodies
Applications	WB/IF/ELISA
Host / Source	Rabbit
Reactivity	Human/Rat/Mouse

### PRODUCT PROPERTIES

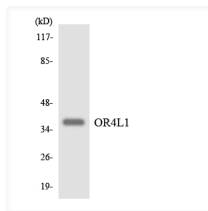
Clonality	Polyclonal
Concentration	1 mg/mL
Conjugation	Unconjugated
Purification	The antibody was affinity-purified from rabbit antiserum by affinity-chromatography using epitope-specific immunogen.
Dilution Range	WB 1:500-1:2000 IF 1:200-1:1000 ELISA 1:10000
Formulation	Liquid in PBS containing 50% Glycerol, 0.5% BSA and 0.02% Sodium Azide.
Isotype	IgG
Molecular Weight	Observed: 34kD
Storage Instruction	Store at -20°C for up to 1 year from the date of receipt, and avoid repeat freeze-thaw cycles.

### TARGET INFORMATION

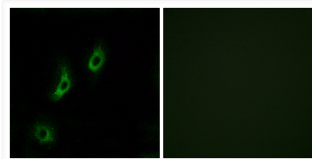
Gene ID	<a href="#">122742</a>
Gene Symbol	<a href="#">OR4L1</a>
UniProt ID	<a href="#">OR4L1_HUMAN</a>
Immunogen Region	262-311
Specificity	Olfactory receptor 4L1 Polyclonal Antibody detects endogenous levels of Olfactory receptor 4L1 protein.

### ADDITIONAL INFORMATION

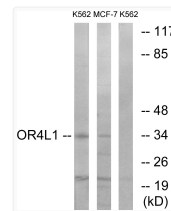
Note **STRICTLY FOR FURTHER SCIENTIFIC RESEARCH USE ONLY (RUO). MUST NOT TO BE USED IN DIAGNOSTIC OR THERAPEUTIC APPLICATIONS.**



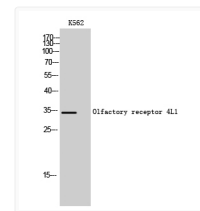
Western blot analysis of the lysates from HepG2 cells using OR4L1 antibody.



Immunofluorescence analysis of COS7 cells, using OR4L1 Antibody. The picture on the right is blocked with the synthesized peptide.



Western blot analysis of lysates from K562 and MCF-7 cells, using OR4L1 Antibody. The lane on the right is blocked with the synthesized peptide.



Western blot analysis of K562 cells using Olfactory receptor 4L1 Polyclonal Antibody