

Anti-OR4C16 antibody (261-310) (STJ94702)

GENERAL INFORMATION

Product Type	Primary antibodies
Applications	WB/IF/ELISA
Host / Source	Rabbit
Reactivity	Human/Rat/Mouse

PRODUCT PROPERTIES

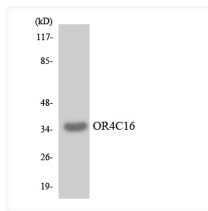
Clonality	Polyclonal
Concentration	1 mg/mL
Conjugation	Unconjugated
Purification	The antibody was affinity-purified from rabbit antiserum by affinity-chromatography using epitope-specific immunogen.
Dilution Range	WB 1:500-1:2000 IF 1:200-1:1000 ELISA 1:20000
Formulation	Liquid in PBS containing 50% Glycerol, 0.5% BSA and 0.02% Sodium Azide.
Isotype	IgG
Molecular Weight	Observed: 35kD
Storage Instruction	Store at -20°C for up to 1 year from the date of receipt, and avoid repeat freeze-thaw cycles.

TARGET INFORMATION

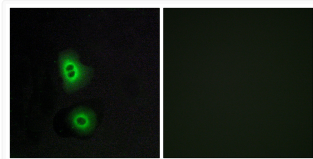
Gene ID	219428
Gene Symbol	OR4C16
UniProt ID	OR4CG_HUMAN
Immunogen Region	261-310
Specificity	Olfactory receptor 4C16 Polyclonal Antibody detects endogenous levels of Olfactory receptor 4C16 protein.

ADDITIONAL INFORMATION

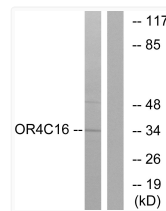
Note STRICTLY FOR FURTHER SCIENTIFIC RESEARCH USE ONLY (RUO). MUST NOT TO BE USED IN DIAGNOSTIC OR THERAPEUTIC APPLICATIONS.



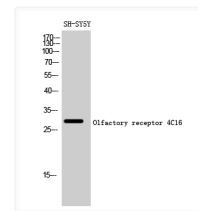
Western blot analysis of the lysates from K562 cells using OR4C16 antibody.



Immunofluorescence analysis of A549 cells, using OR4C16 Antibody. The picture on the right is blocked with the synthesized peptide.



Western blot analysis of lysates from LOVO cells, using OR4C16 Antibody. The lane on the right is blocked with the synthesized peptide.



Western blot analysis of SH-SY5Y cells using Olfactory receptor 4C16 Polyclonal Antibody diluted at 1 : 500