

Anti-OR2T2/OR2T35 antibody (61-110) (STJ94687)

GENERAL INFORMATION

Product Type	Primary antibodies
Applications	WB/IF/ELISA
Host / Source	Rabbit
Reactivity	Human/Rat/Mouse

PRODUCT PROPERTIES

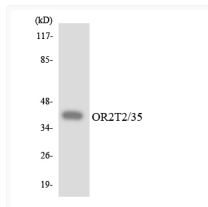
Clonality	Polyclonal
Concentration	1 mg/mL
Conjugation	Unconjugated
Purification	The antibody was affinity-purified from rabbit antiserum by affinity-chromatography using epitope-specific immunogen.
Dilution Range	WB 1:500-1:2000 IF 1:200-1:1000 ELISA 1:10000
Formulation	Liquid in PBS containing 50% Glycerol, 0.5% BSA and 0.02% Sodium Azide.
Isotype	IgG
Molecular Weight	Observed: 33kD
Storage Instruction	Store at -20°C for up to 1 year from the date of receipt, and avoid repeat freeze-thaw cycles.

TARGET INFORMATION

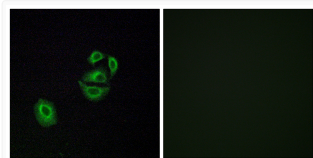
Gene ID	401992 403244
Gene Symbol	OR2T2 OR2T35
UniProt ID	OR2T2_HUMAN O2T35_HUMAN
Immunogen Region	61-110
Specificity	Olfactory receptor 2T2/35 Polyclonal Antibody detects endogenous levels of Olfactory receptor 2T2/35 protein.

ADDITIONAL INFORMATION

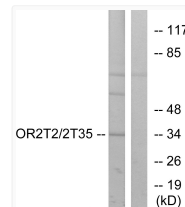
Note STRICTLY FOR FURTHER SCIENTIFIC RESEARCH USE ONLY (RUO). MUST NOT TO BE USED IN DIAGNOSTIC OR THERAPEUTIC APPLICATIONS.



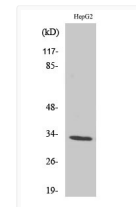
Western blot analysis of the lysates from HeLa cells using OR2T2/35 antibody.



Immunofluorescence analysis of A549 cells, using OR2T2/2T35 Antibody. The picture on the right is blocked with the synthesized peptide.



Western blot analysis of lysates from HepG2 cells, using OR2T2/2T35 Antibody. The lane on the right is blocked with the synthesized peptide.



Western blot analysis of various cells using OR2T2/35 Polyclonal Antibody