

Anti-OR2T11 antibody (51-100) (STJ94684)

GENERAL INFORMATION

Product Type	Primary antibodies
Applications	WB/IF/ELISA
Host / Source	Rabbit
Reactivity	Human/Rat/Mouse

PRODUCT PROPERTIES

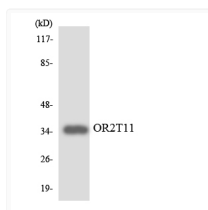
Clonality	Polyclonal
Concentration	1 mg/mL
Conjugation	Unconjugated
Purification	The antibody was affinity-purified from rabbit antiserum by affinity-chromatography using epitope-specific immunogen.
Dilution Range	WB 1:500-1:2000 IF 1:200-1:1000 ELISA 1:5000
Formulation	Liquid in PBS containing 50% Glycerol, 0.5% BSA and 0.02% Sodium Azide.
Isotype	IgG
Molecular Weight	Observed: 35kD
Storage Instruction	Store at -20°C for up to 1 year from the date of receipt, and avoid repeat freeze-thaw cycles.

TARGET INFORMATION

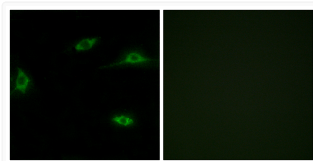
Gene ID	127077
Gene Symbol	OR2T11
UniProt ID	O2T11_HUMAN
Immunogen Region	51-100
Specificity	Olfactory receptor 2T11 Polyclonal Antibody detects endogenous levels of Olfactory receptor 2T11 protein.

ADDITIONAL INFORMATION

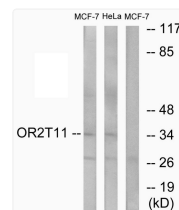
Note STRICTLY FOR FURTHER SCIENTIFIC RESEARCH USE ONLY (RUO). MUST NOT TO BE USED IN DIAGNOSTIC OR THERAPEUTIC APPLICATIONS.



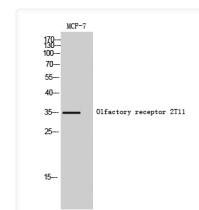
Western blot analysis of the lysates from RAW264.7 cells using OR2T11 antibody.



Immunofluorescence analysis of LOVO cells, using OR2T11 Antibody. The picture on the right is blocked with the synthesized peptide.



Western blot analysis of lysates from MCF-7 and HeLa cells, using OR2T11 Antibody. The lane on the right is blocked with the synthesized peptide.



Western blot analysis of MCF-7 cells using Olfactory receptor 2T11 Polyclonal Antibody