

Anti-OR2AT4 antibody (271-320) (STJ94663)

GENERAL INFORMATION

Product Type	Primary antibodies
Applications	IF/ELISA
Host / Source	Rabbit
Reactivity	Human/Rat/Mouse

PRODUCT PROPERTIES

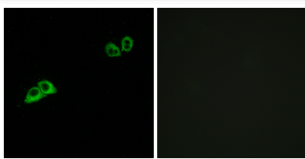
Clonality	Polyclonal
Concentration	1 mg/mL
Conjugation	Unconjugated
Purification	The antibody was affinity-purified from rabbit antiserum by affinity-chromatography using epitope-specific immunogen.
Dilution Range	IF 1:200-1:1000 ELISA 1:20000
Formulation	Liquid in PBS containing 50% Glycerol, 0.5% BSA and 0.02% Sodium Azide.
Isotype	IgG
Molecular Weight	Calculated: 36kD
Storage Instruction	Store at -20°C for up to 1 year from the date of receipt, and avoid repeat freeze-thaw cycles.

TARGET INFORMATION

Gene ID	341152
Gene Symbol	OR2AT4
UniProt ID	O2AT4_HUMAN
Immunogen Region	271-320
Specificity	Olfactory receptor 2AT4 Polyclonal Antibody detects endogenous levels of Olfactory receptor 2AT4 protein.

ADDITIONAL INFORMATION

Note STRICTLY FOR FURTHER SCIENTIFIC RESEARCH USE ONLY (RUO). MUST NOT TO BE USED IN DIAGNOSTIC OR THERAPEUTIC APPLICATIONS.



Immunofluorescence analysis of MCF7 cells, using OR2AT4 Antibody. The picture on the right is blocked with the synthesized peptide.