

Anti-OR1S1/OR1S2 antibody (241-290) (STJ94652)

GENERAL INFORMATION

Product Type	Primary antibodies
Applications	WB/IF/ELISA
Host / Source	Rabbit
Reactivity	Human/Rat/Mouse

PRODUCT PROPERTIES

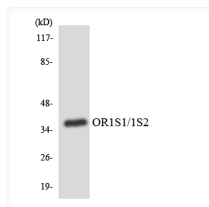
Clonality	Polyclonal
Concentration	1 mg/mL
Conjugation	Unconjugated
Purification	The antibody was affinity-purified from rabbit antiserum by affinity-chromatography using epitope-specific immunogen.
Dilution Range	WB 1:500-1:2000 IF 1:200-1:1000 ELISA 1:20000
Formulation	Liquid in PBS containing 50% Glycerol, 0.5% BSA and 0.02% Sodium Azide.
Isotype	IgG
Molecular Weight	Observed: 33kD
Storage Instruction	Store at -20°C for up to 1 year from the date of receipt, and avoid repeat freeze-thaw cycles.

TARGET INFORMATION

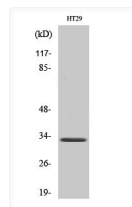
Gene ID	219958 219959
Gene Symbol	OR1S2 OR1S1
UniProt ID	OR1S2_HUMAN OR1S1_HUMAN
Immunogen Region	241-290
Specificity	Olfactory receptor 1S1/2 Polyclonal Antibody detects endogenous levels of Olfactory receptor 1S1/2 protein.

ADDITIONAL INFORMATION

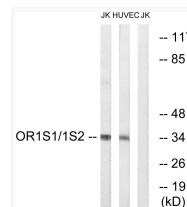
Note STRICTLY FOR FURTHER SCIENTIFIC RESEARCH USE ONLY (RUO). MUST NOT TO BE USED IN DIAGNOSTIC OR THERAPEUTIC APPLICATIONS.



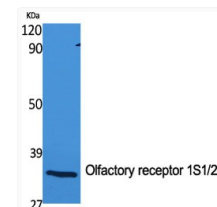
Western blot analysis of the lysates from HUVEC cells using OR1S1/1S2 antibody.



Western blot analysis of HuvEc cells using Olfactory receptor 1S1/2 Polyclonal Antibody



Western blot analysis of lysates from Jurkat and HUVEC cells, using OR1S1/1S2 Antibody. The lane on the right is blocked with the synthesized peptide.



Western blot analysis of various cells using Olfactory receptor 1S1/2 Polyclonal Antibody