

Anti-OR10T2 antibody (231-280) (STJ94630)

GENERAL INFORMATION

Product Type	Primary antibodies
Applications	WB/ELISA
Host / Source	Rabbit
Reactivity	Human/Rat/Mouse

PRODUCT PROPERTIES

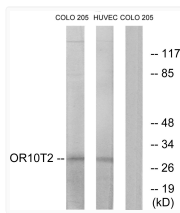
Clonality	Polyclonal
Concentration	1 mg/mL
Conjugation	Unconjugated
Purification	The antibody was affinity-purified from rabbit antiserum by affinity-chromatography using epitope-specific immunogen.
Dilution Range	WB 1:500-1:2000 ELISA 1:20000
Formulation	Liquid in PBS containing 50% Glycerol, 0.5% BSA and 0.02% Sodium Azide.
Isotype	IgG
Molecular Weight	Observed: 30kD
Storage Instruction	Store at -20°C for up to 1 year from the date of receipt, and avoid repeat freeze-thaw cycles.

TARGET INFORMATION

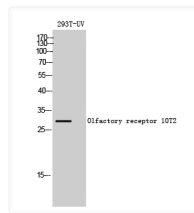
Gene ID	128360
Gene Symbol	OR10T2
UniProt ID	O10T2_HUMAN
Immunogen Region	231-280
Specificity	Olfactory receptor 10T2 Polyclonal Antibody detects endogenous levels of Olfactory receptor 10T2 protein.

ADDITIONAL INFORMATION

Note **STRICTLY FOR FURTHER SCIENTIFIC RESEARCH USE ONLY (RUO). MUST NOT TO BE USED IN DIAGNOSTIC OR THERAPEUTIC APPLICATIONS.**



Western blot analysis of lysates from HUVEC and COLO cells, using OR10T2 Antibody. The lane on the right is blocked with the synthesized peptide.



Western blot analysis of 293T-UV cells using Olfactory receptor 10T2 Polyclonal Antibody diluted at 1:500.