

Anti-OR10H3/OR10H4 antibody (234-283) (STJ94621)

GENERAL INFORMATION

Product Type	Primary antibodies
Applications	WB/ELISA
Host / Source	Rabbit
Reactivity	Human/Rat/Mouse

PRODUCT PROPERTIES

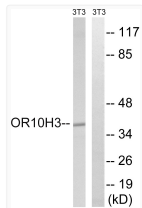
Clonality	Polyclonal
Concentration	1 mg/mL
Conjugation	Unconjugated
Purification	The antibody was affinity-purified from rabbit antiserum by affinity-chromatography using epitope-specific immunogen.
Dilution Range	WB 1:500-1:2000 ELISA 1:10000
Formulation	Liquid in PBS containing 50% Glycerol, 0.5% BSA and 0.02% Sodium Azide.
Isotype	IgG
Molecular Weight	Observed: 38kD
Storage Instruction	Store at -20°C for up to 1 year from the date of receipt, and avoid repeat freeze-thaw cycles.

TARGET INFORMATION

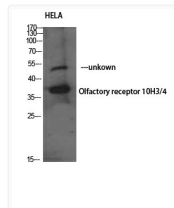
Gene ID	26532 126541
Gene Symbol	OR10H3 OR10H4
UniProt ID	O10H3_HUMAN O10H4_HUMAN
Immunogen Region	234-283
Specificity	Olfactory receptor 10H3/4 Polyclonal Antibody detects endogenous levels of Olfactory receptor 10H3/4 protein.

ADDITIONAL INFORMATION

Note STRICTLY FOR FURTHER SCIENTIFIC RESEARCH USE ONLY (RUO). MUST NOT TO BE USED IN DIAGNOSTIC OR THERAPEUTIC APPLICATIONS.



Western blot analysis of lysates from NIH/3T3 cells, using OR10H3/10H4 Antibody. The lane on the right is blocked with the synthesized peptide.



Western blot analysis of HELA using Olfactory receptor 10H3/4 Polyclonal Antibody. Antibody was diluted at 1:1000