

Anti-NUDC antibody (282-331) (STJ94574)

GENERAL INFORMATION

Product Type	Primary antibodies
Applications	WB/IHC/IF/ELISA
Host / Source	Rabbit
Reactivity	Human/Mouse/Rat

PRODUCT PROPERTIES

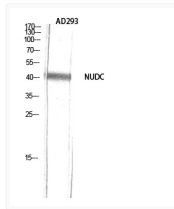
Clonality	Polyclonal
Concentration	1 mg/mL
Conjugation	Unconjugated
Purification	The antibody was affinity-purified from rabbit antiserum by affinity-chromatography using epitope-specific immunogen.
Dilution Range	WB 1:500-1:2000 IHC 1:100-1:300 ELISA 1:10000 IF 1:50-200
Formulation	Liquid in PBS containing 50% Glycerol, 0.5% BSA and 0.02% Sodium Azide.
Isotype	IgG
Molecular Weight	Observed: 38kD
Storage Instruction	Store at -20°C for up to 1 year from the date of receipt, and avoid repeat freeze-thaw cycles.

TARGET INFORMATION

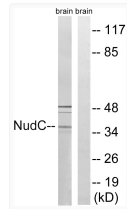
Gene ID	10726
Gene Symbol	NUDC
UniProt ID	NUDC_HUMAN
Immunogen Region	282-331
Specificity	NUDC Polyclonal Antibody detects endogenous levels of NUDC protein.

ADDITIONAL INFORMATION

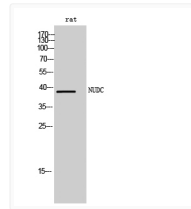
Note **STRICTLY FOR FURTHER SCIENTIFIC RESEARCH USE ONLY (RUO). MUST NOT TO BE USED IN DIAGNOSTIC OR THERAPEUTIC APPLICATIONS.**



Western blot analysis of AD293 using NUDC Polyclonal Antibody diluted at 1: 2000



Western blot analysis of lysates from rat brain cells, using NudC Antibody. The lane on the right is blocked with the synthesized peptide.



Western blot analysis of rat cells using NUDC Polyclonal Antibody diluted at 1: 2000