

Anti-SLC9A9 antibody (171-220) (STJ94485)

GENERAL INFORMATION

Product Type	Primary antibodies
Applications	WB/ELISA
Host / Source	Rabbit
Reactivity	Human/Mouse

PRODUCT PROPERTIES

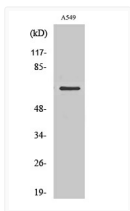
Clonality	Polyclonal
Concentration	1 mg/mL
Conjugation	Unconjugated
Purification	The antibody was affinity-purified from rabbit antiserum by affinity-chromatography using epitope-specific immunogen.
Dilution Range	WB 1:500-1:2000 ELISA 1:40000
Formulation	Liquid in PBS containing 50% Glycerol, 0.5% BSA and 0.02% Sodium Azide.
Isotype	IgG
Molecular Weight	Observed: 65kD
Storage Instruction	Store at -20°C for up to 1 year from the date of receipt, and avoid repeat freeze-thaw cycles.

TARGET INFORMATION

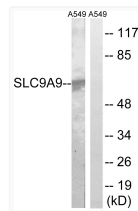
Gene ID	285195
Gene Symbol	SLC9A9
UniProt ID	SL9A9_HUMAN
Immunogen Region	171-220
Specificity	NHE-9 Polyclonal Antibody detects endogenous levels of NHE-9 protein.

ADDITIONAL INFORMATION

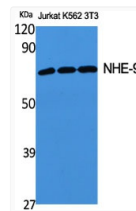
Note **STRICTLY FOR FURTHER SCIENTIFIC RESEARCH USE ONLY (RUO). MUST NOT TO BE USED IN DIAGNOSTIC OR THERAPEUTIC APPLICATIONS.**



Western blot analysis of RAW264.7 cells using NHE-9 Polyclonal Antibody



Western blot analysis of lysates from A549 cells, using SLC9A9 Antibody. The lane on the right is blocked with the synthesized peptide.



Western blot analysis of various cells using NHE-9 Polyclonal Antibody