

Anti-SLC9A6 antibody (551-600) (STJ94482)

GENERAL INFORMATION

Product Type	Primary antibodies
Applications	WB/ELISA
Host / Source	Rabbit
Reactivity	Human/Mouse

PRODUCT PROPERTIES

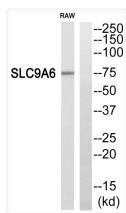
Clonality	Polyclonal
Concentration	1 mg/mL
Conjugation	Unconjugated
Purification	The antibody was affinity-purified from rabbit antiserum by affinity-chromatography using epitope-specific immunogen.
Dilution Range	WB 1:500-1:2000 ELISA 1:40000
Formulation	Liquid in PBS containing 50% Glycerol, 0.5% BSA and 0.02% Sodium Azide.
Isotype	IgG
Molecular Weight	Observed: 75kD
Storage Instruction	Store at -20°C for up to 1 year from the date of receipt, and avoid repeat freeze-thaw cycles.

TARGET INFORMATION

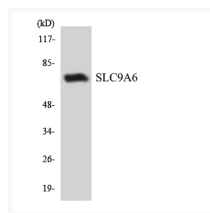
Gene ID	10479
Gene Symbol	SLC9A6
UniProt ID	SL9A6_HUMAN
Immunogen Region	551-600
Specificity	NHE-6 Polyclonal Antibody detects endogenous levels of NHE-6 protein.

ADDITIONAL INFORMATION

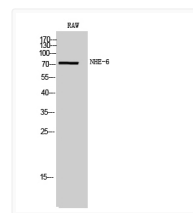
Note **STRICTLY FOR FURTHER SCIENTIFIC RESEARCH USE ONLY (RUO). MUST NOT TO BE USED IN DIAGNOSTIC OR THERAPEUTIC APPLICATIONS.**



Western blot analysis of SLC9A6 Antibody. The lane on the right is blocked with the SLC9A6 peptide.



Western blot analysis of the lysates from COLO205 cells using SLC9A6 antibody.



Western blot analysis of RAW cells using NHE-6 Polyclonal Antibody