

Anti-CSPG5 antibody (211-260) (STJ94431)

GENERAL INFORMATION

Product Type	Primary antibodies
Applications	WB/IHC
Host / Source	Rabbit
Reactivity	Human/Mouse/Rat

PRODUCT PROPERTIES

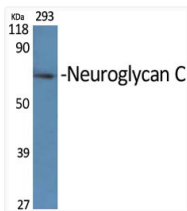
Clonality	Polyclonal
Concentration	1 mg/mL
Conjugation	Unconjugated
Purification	The antibody was affinity-purified from rabbit antiserum by affinity-chromatography using epitope-specific immunogen.
Dilution Range	WB 1:500-2000 IHC-p 1:50-300
Formulation	Liquid in PBS containing 50% Glycerol, 0.5% BSA and 0.02% Sodium Azide.
Isotype	IgG
Molecular Weight	Observed: 60kD
Storage Instruction	Store at -20°C for up to 1 year from the date of receipt, and avoid repeat freeze-thaw cycles.

TARGET INFORMATION

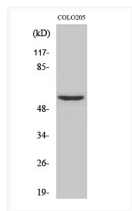
Gene ID	10675
Gene Symbol	CSPG5
UniProt ID	CSPG5_HUMAN
Immunogen Region	211-260
Specificity	Neuroglycan C Polyclonal Antibody detects endogenous levels of Neuroglycan C protein.

ADDITIONAL INFORMATION

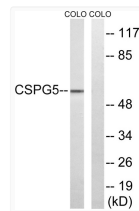
Note **STRICTLY FOR FURTHER SCIENTIFIC RESEARCH USE ONLY (RUO). MUST NOT TO BE USED IN DIAGNOSTIC OR THERAPEUTIC APPLICATIONS.**



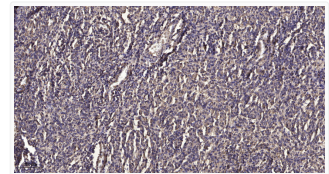
Western blot analysis of various cells using Neuroglycan C Polyclonal Antibody STJ94431



Western blot analysis of HeLa cells using Neuroglycan C Polyclonal Antibody STJ94431



Western blot analysis of lysates from COLO and HeLa cells, using CSPG5 Antibody. The lane on the right was blocked with STJ94431



Immunohistochemical analysis of paraffin-embedded human meningioma. 1, Antibody was diluted at 1:200 (4°C overnight). STJ94431