

Anti-NRXN3 antibody (30-110) (STJ94422)

GENERAL INFORMATION

Product Type	Primary antibodies
Applications	WB/ELISA/IHC
Host / Source	Rabbit
Reactivity	Human/Rat/Mouse

PRODUCT PROPERTIES

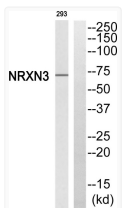
Clonality	Polyclonal
Concentration	1 mg/mL
Conjugation	Unconjugated
Purification	The antibody was affinity-purified from rabbit antiserum by affinity-chromatography using epitope-specific immunogen.
Dilution Range	WB 1:500-2000 IHC-p 1:50-300 ELISA 2000-20000
Formulation	Liquid in PBS containing 50% Glycerol, 0.5% BSA and 0.02% Sodium Azide.
Isotype	IgG
Molecular Weight	Observed: 70kD
Storage Instruction	Store at -20°C for up to 1 year from the date of receipt, and avoid repeat freeze-thaw cycles.

TARGET INFORMATION

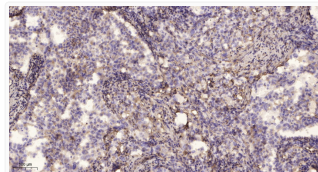
Gene ID	9369
Gene Symbol	NRXN3
UniProt ID	NRX3B_HUMAN
Immunogen Region	30-110
Specificity	Neurexin III Beta Polyclonal Antibody detects endogenous levels of Neurexin III Beta protein.

ADDITIONAL INFORMATION

Note STRICTLY FOR FURTHER SCIENTIFIC RESEARCH USE ONLY (RUO). MUST NOT TO BE USED IN DIAGNOSTIC OR THERAPEUTIC APPLICATIONS.



Western blot analysis of NRXN3 antibody. The lane on the right is blocked with the NRXN3 peptide. STJ94422



Immunohistochemical analysis of paraffin-embedded human lung cancer. 1. Antibody was diluted at 1:200 (4^h overnight). STJ94422