

Anti-ERBB2 antibody (641-690) (STJ94412)

GENERAL INFORMATION

Product Type	Primary antibodies
Applications	WB/IHC/IF/ELISA
Host / Source	Rabbit
Reactivity	Human/Mouse/Rat

PRODUCT PROPERTIES

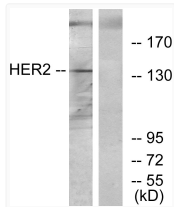
Clonality	Polyclonal
Concentration	1 mg/mL
Conjugation	Unconjugated
Purification	The antibody was affinity-purified from rabbit antiserum by affinity-chromatography using epitope-specific immunogen.
Dilution Range	WB 1:500-1:2000 IHC 1:100-1:300 IF 1:200-1:1000 ELISA 1:20000
Formulation	Liquid in PBS containing 50% Glycerol, 0.5% BSA and 0.02% Sodium Azide.
Isotype	IgG
Molecular Weight	Observed: 180kD
Storage Instruction	Store at -20°C for up to 1 year from the date of receipt, and avoid repeat freeze-thaw cycles.

TARGET INFORMATION

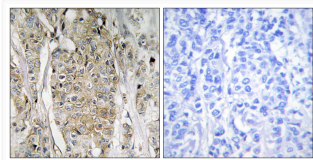
Gene ID	2064
Gene Symbol	ERBB2
UniProt ID	ERBB2_HUMAN
Immunogen Region	641-690
Specificity	Neu Polyclonal Antibody detects endogenous levels of Neu protein.

ADDITIONAL INFORMATION

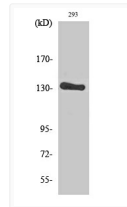
Note **STRICTLY FOR FURTHER SCIENTIFIC RESEARCH USE ONLY (RUO). MUST NOT TO BE USED IN DIAGNOSTIC OR THERAPEUTIC APPLICATIONS.**



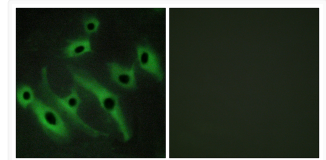
Western blot analysis of lysates from 293 cells, using HER2 Antibody. The lane on the right is blocked with the synthesized peptide.



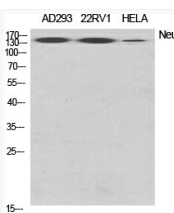
Immunohistochemistry analysis of paraffin-embedded human breast carcinoma tissue, using HER2 Antibody. The picture on the right is blocked with the synthesized peptide.



Western blot analysis of 293 cells using Neu Polyclonal Antibody diluted at 1:2000



Immunofluorescence analysis of HeLa cells, using HER2 Antibody. The picture on the right is blocked with the synthesized peptide.



Western blot analysis of various cells using Neu Polyclonal Antibody diluted at 1:2000