

## Anti-ELK3 antibody (323-372) (STJ94405)

### GENERAL INFORMATION

Product Type	Primary antibodies
Applications	IF/ELISA
Host / Source	Rabbit
Reactivity	Human/Mouse

### PRODUCT PROPERTIES

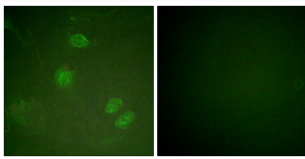
Clonality	Polyclonal
Concentration	1 mg/mL
Conjugation	Unconjugated
Purification	The antibody was affinity-purified from rabbit antiserum by affinity-chromatography using epitope-specific immunogen.
Dilution Range	IF 1:200-1:1000 ELISA 1:20000
Formulation	Liquid in PBS containing 50% Glycerol, 0.5% BSA and 0.02% Sodium Azide.
Isotype	IgG
Molecular Weight	Calculated: 44kD
Storage Instruction	Store at -20°C for up to 1 year from the date of receipt, and avoid repeat freeze-thaw cycles.

### TARGET INFORMATION

Gene ID	<a href="#">2004</a>
Gene Symbol	<a href="#">ELK3</a>
UniProt ID	<a href="#">ELK3_HUMAN</a>
Immunogen Region	323-372
Specificity	Net Polyclonal Antibody detects endogenous levels of Net protein.

### ADDITIONAL INFORMATION

Note STRICTLY FOR FURTHER SCIENTIFIC RESEARCH USE ONLY (RUO). MUST NOT TO BE USED IN DIAGNOSTIC OR THERAPEUTIC APPLICATIONS.



Immunofluorescence analysis of HeLa cells, using ELK3 Antibody. The picture on the right is blocked with the synthesized peptide.