

Anti-MT-ND1 antibody (176-225) (STJ94365)

GENERAL INFORMATION

Product Type	Primary antibodies
Applications	WB/IHC/IF/ELISA
Host / Source	Rabbit
Reactivity	Human/Rat/Mouse

PRODUCT PROPERTIES

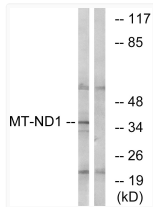
Clonality	Polyclonal
Concentration	1 mg/mL
Conjugation	Unconjugated
Purification	The antibody was affinity-purified from rabbit antiserum by affinity-chromatography using epitope-specific immunogen.
Dilution Range	WB 1:500-1:2000 IHC 1:100-1:300 ELISA 1:40000 IF 1:50-200
Formulation	Liquid in PBS containing 50% Glycerol, 0.5% BSA and 0.02% Sodium Azide.
Isotype	IgG
Molecular Weight	Observed: 36kD
Storage Instruction	Store at -20°C for up to 1 year from the date of receipt, and avoid repeat freeze-thaw cycles.

TARGET INFORMATION

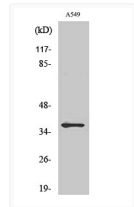
Gene ID	4535
Gene Symbol	MT-ND1
UniProt ID	NU1M_HUMAN
Immunogen Region	176-225
Specificity	ND1 Polyclonal Antibody detects endogenous levels of ND1 protein.

ADDITIONAL INFORMATION

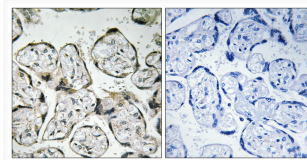
Note **STRICTLY FOR FURTHER SCIENTIFIC RESEARCH USE ONLY (RUO). MUST NOT TO BE USED IN DIAGNOSTIC OR THERAPEUTIC APPLICATIONS.**



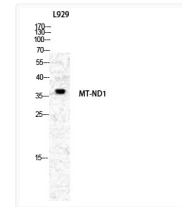
Western blot analysis of lysates from Jurkat cells, using MT-ND1 Antibody. The lane on the right is blocked with the synthesized peptide.



Western blot analysis of COLO205 cells using ND1 Polyclonal Antibody diluted at 1 : 1000



Immunohistochemistry analysis of paraffin-embedded human placenta tissue, using MT-ND1 Antibody. The picture on the right is blocked with the synthesized peptide.



Western blot analysis of various cells using ND1 Polyclonal Antibody diluted at 1 : 1000