

Anti-NBPF12 antibody (121-150) (STJ94349)

GENERAL INFORMATION

Product Type	Primary antibodies
Applications	WB/IHC/IF/ELISA
Host / Source	Rabbit
Reactivity	Human/Rat/Mouse

PRODUCT PROPERTIES

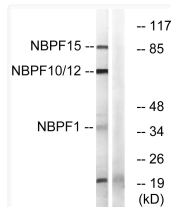
Clonality	Polyclonal
Concentration	1 mg/mL
Conjugation	Unconjugated
Purification	The antibody was affinity-purified from rabbit antiserum by affinity-chromatography using epitope-specific immunogen.
Dilution Range	WB 1:500-1:2000 IHC 1:100-1:300 ELISA 1:40000 IF 1:50-200
Formulation	Liquid in PBS containing 50% Glycerol, 0.5% BSA and 0.02% Sodium Azide.
Isotype	IgG
Molecular Weight	Observed: 36kD
Storage Instruction	Store at -20°C for up to 1 year from the date of receipt, and avoid repeat freeze-thaw cycles.

TARGET INFORMATION

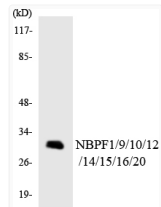
Gene ID	149013 25832 284565
Gene Symbol	NBPF12 NBPF14 NBPFC_HUMAN NBPFE_HUMAN NBPFH_HUMAN
Immunogen Region	121-150
Specificity	NBPF1/9/10/12/14/15/16/20 Polyclonal Antibody detects endogenous levels of NBPF1/9/10/12/14/15/16/20 protein.

ADDITIONAL INFORMATION

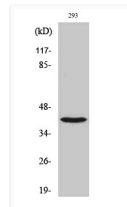
Note STRICTLY FOR FURTHER SCIENTIFIC RESEARCH USE ONLY (RUO). MUST NOT TO BE USED IN DIAGNOSTIC OR THERAPEUTIC APPLICATIONS.



Western blot analysis of lysates from 293, HepG2, Jurkat, and COLO cells, using NBPF1/9/10/12/14/15/16/20 Antibody. The lane on the right is blocked with the synthesized peptide.



Western blot analysis of the lysates from HT-29 cells using NBPF1/9/10/12/14/15/16/20 antibody.



Western blot analysis of various cells using NBPF1/9/10/12/14/15/16/20 Polyclonal Antibody