

## Anti-NRAS/HRAS/KRAS antibody (1-50) (STJ94325)

### GENERAL INFORMATION

Product Type	Primary antibodies
Applications	WB/IHC/IF/ELISA
Host / Source	Rabbit
Reactivity	Human/Mouse/Rat

### PRODUCT PROPERTIES

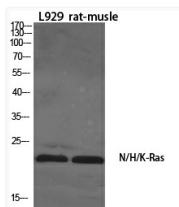
Clonality	Polyclonal
Concentration	1 mg/mL
Conjugation	Unconjugated
Purification	The antibody was affinity-purified from rabbit antiserum by affinity-chromatography using epitope-specific immunogen.
Dilution Range	WB 1:500-1:2000 IHC-p: 1:100-300 ELISA 1:20000 IF 1:100-300
Formulation	Liquid in PBS containing 50% Glycerol, 0.5% BSA and 0.02% Sodium Azide.
Isotype	IgG
Molecular Weight	Observed: 21kD
Storage Instruction	Store at -20°C for up to 1 year from the date of receipt, and avoid repeat freeze-thaw cycles.

### TARGET INFORMATION

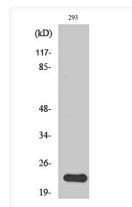
Gene ID	<a href="#">3845</a> <a href="#">3265</a> <a href="#">4893</a> <a href="#">KRAS</a> <a href="#">HRAS</a> <a href="#">RASK HUMAN</a> <a href="#">RASH HUMAN</a> <a href="#">RASN HUMAN</a>
Immunogen Region	1-50
Specificity	N/H/K-Ras Polyclonal Antibody detects endogenous levels of N/H/K-Ras protein.

### ADDITIONAL INFORMATION

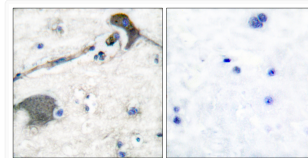
Note STRICTLY FOR FURTHER SCIENTIFIC RESEARCH USE ONLY (RUO). MUST NOT TO BE USED IN DIAGNOSTIC OR THERAPEUTIC APPLICATIONS.



Western blot analysis of various cells using N/H/K-Ras polyclonal antibody diluted at 1:1000 STJ94325



Western Blot analysis of 293 cells using N/H/K-Ras Polyclonal Antibody diluted at 1:1000 STJ94325



Immunohistochemistry analysis of paraffin-embedded human brain tissue using RASH/RASK Antibody. The picture on the STJ94325