

Anti-MYOM2 antibody (612-661) (STJ94312)

GENERAL INFORMATION

Product Type	Primary antibodies
Applications	WB/ELISA/IHC
Host / Source	Rabbit
Reactivity	Human/Mouse/Monkey

PRODUCT PROPERTIES

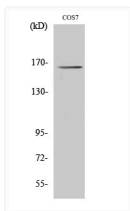
Clonality	Polyclonal
Concentration	1 mg/mL
Conjugation	Unconjugated
Purification	The antibody was affinity-purified from rabbit antiserum by affinity-chromatography using epitope-specific immunogen.
Dilution Range	WB 1:500-2000 IHC-p 1:50-300 ELISA 2000-20000
Formulation	Liquid in PBS containing 50% Glycerol, 0.5% BSA and 0.02% Sodium Azide.
Isotype	IgG
Molecular Weight	Observed: 165kD
Storage Instruction	Store at -20°C for up to 1 year from the date of receipt, and avoid repeat freeze-thaw cycles.

TARGET INFORMATION

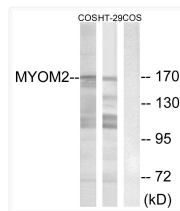
Gene ID	9172
Gene Symbol	MYOM2
UniProt ID	MYOM2_HUMAN
Immunogen Region	612-661
Specificity	Myomesin-2 Polyclonal Antibody detects endogenous levels of Myomesin-2 protein.

ADDITIONAL INFORMATION

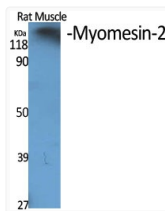
Note STRICTLY FOR FURTHER SCIENTIFIC RESEARCH USE ONLY (RUO). MUST NOT TO BE USED IN DIAGNOSTIC OR THERAPEUTIC APPLICATIONS.



Western blot analysis of HT29 cells using Myomesin-2 Polyclonal Antibody diluted at 1 : 500



Western blot analysis of lysates from COS7 and HT-29 cells, using MYOM2 Antibody. The lane on the right is blocked with the synthesized peptide.



Western blot analysis of various cells using Myomesin-2 Polyclonal Antibody diluted at 1 : 500