

Anti-MYF6 antibody (116-165) (STJ94296)

GENERAL INFORMATION

Product Type	Primary antibodies
Applications	WB/IHC/IF/ELISA
Host / Source	Rabbit
Reactivity	Human/Mouse/Rat

PRODUCT PROPERTIES

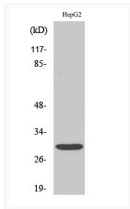
Clonality	Polyclonal
Concentration	1 mg/mL
Conjugation	Unconjugated
Purification	The antibody was affinity-purified from rabbit antiserum by affinity-chromatography using epitope-specific immunogen.
Dilution Range	WB 1:500-1:2000 IHC 1:100-1:300 ELISA 1:20000 IF 1:50-200
Formulation	Liquid in PBS containing 50% Glycerol, 0.5% BSA and 0.02% Sodium Azide.
Isotype	IgG
Molecular Weight	Observed: 26kD
Storage Instruction	Store at -20°C for up to 1 year from the date of receipt, and avoid repeat freeze-thaw cycles.

TARGET INFORMATION

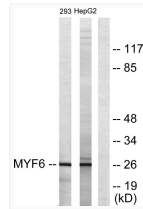
Gene ID	4618
Gene Symbol	MYF6
UniProt ID	MYF6_HUMAN
Immunogen Region	116-165
Specificity	Myf-6 Polyclonal Antibody detects endogenous levels of Myf-6 protein.

ADDITIONAL INFORMATION

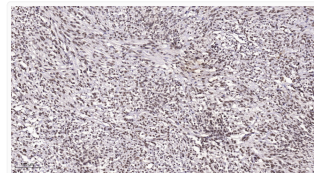
Note STRICTLY FOR FURTHER SCIENTIFIC RESEARCH USE ONLY (RUO). MUST NOT TO BE USED IN DIAGNOSTIC OR THERAPEUTIC APPLICATIONS.



Western Blot analysis of various cells using Myf-6 Polyclonal Antibody diluted at 1:2000. Cells nucleus extracted by STJ94296



Western blot analysis of lysates from HepG2 and 293 cells, using MYF6 Antibody. The lane on the right was blocked with STJ94296



Immunohistochemical analysis of paraffin-embedded human small intestinal stromal tumor. 1, Tris-EDTA, pH 9.0 was used STJ94296