

Anti-MVK antibody (151-200) (STJ94289)

GENERAL INFORMATION

Product Type	Primary antibodies
Applications	WB/IHC/IF/ELISA
Host / Source	Rabbit
Reactivity	Human/Monkey

PRODUCT PROPERTIES

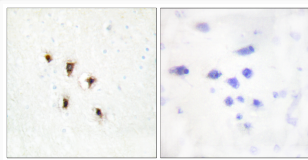
Clonality	Polyclonal
Concentration	1 mg/mL
Conjugation	Unconjugated
Purification	The antibody was affinity-purified from rabbit antiserum by affinity-chromatography using epitope-specific immunogen.
Dilution Range	WB 1:500-1:2000 IHC 1:100-1:300 IF 1:200-1:1000 ELISA 1:10000
Formulation	Liquid in PBS containing 50% Glycerol, 0.5% BSA and 0.02% Sodium Azide.
Isotype	IgG
Molecular Weight	Observed: 42kD
Storage Instruction	Store at -20°C for up to 1 year from the date of receipt, and avoid repeat freeze-thaw cycles.

TARGET INFORMATION

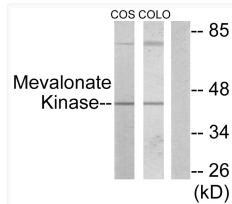
Gene ID	4598
Gene Symbol	MVK
UniProt ID	KIME_HUMAN
Immunogen Region	151-200
Specificity	MVK Polyclonal Antibody detects endogenous levels of MVK protein.

ADDITIONAL INFORMATION

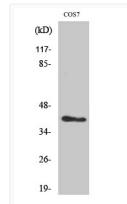
Note **STRICTLY FOR FURTHER SCIENTIFIC RESEARCH USE ONLY (RUO). MUST NOT TO BE USED IN DIAGNOSTIC OR THERAPEUTIC APPLICATIONS.**



Immunohistochemistry analysis of paraffin-embedded human brain tissue, using Mevalonate Kinase Antibody. The picture on the right is blocked with the synthesized peptide.



Western blot analysis of lysates from COS7 and COLO205 cells, using Mevalonate Kinase Antibody. The lane on the right is blocked with the synthesized peptide.



Western blot analysis of various cells using MVK Polyclonal Antibody. The lane on the right is blocked with the synthesized peptide.