

Anti-SIN3B antibody (221-270 aa) (STJ94263)

GENERAL INFORMATION

Product Type	Primary antibodies
Applications	WB/ELISA/IHC
Host / Source	Rabbit
Reactivity	Human/Rat/Mouse

PRODUCT PROPERTIES

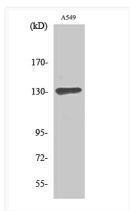
Clonality	Polyclonal
Concentration	1 mg/mL
Conjugation	Unconjugated
Purification	The antibody was affinity-purified from rabbit antiserum by affinity-chromatography using epitope-specific immunogen.
Dilution Range	WB 1:500-2000 IHC-P 1:50-300 ELISA 2000-20000
Formulation	Liquid in PBS containing 50% Glycerol, 0.5% BSA and 0.02% Sodium Azide.
Isotype	IgG
Molecular Weight	Observed: 130kD
Storage Instruction	Store at -20°C for up to 1 year from the date of receipt, and avoid repeat freeze-thaw cycles.

TARGET INFORMATION

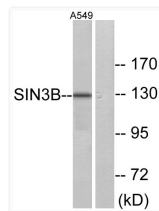
Gene ID	23309
Gene Symbol	SIN3B
UniProt ID	SIN3B_HUMAN
Immunogen Region	221-270 aa
Specificity	Sin3B Polyclonal Antibody detects endogenous levels of Sin3B protein.

ADDITIONAL INFORMATION

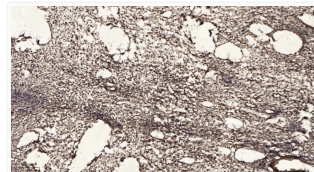
Note STRICTLY FOR FURTHER SCIENTIFIC RESEARCH USE ONLY (RUO). MUST NOT TO BE USED IN DIAGNOSTIC OR THERAPEUTIC APPLICATIONS.



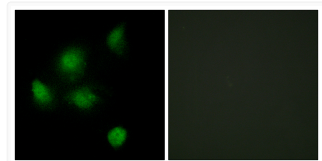
Western blot analysis of various cells using Sin3B polyclonal antibody STJ94263



Western blot analysis of lysates from A549 cells, using SIN3B Antibody. The lane on the right was blocked with the STJ94263



Immunohistochemical analysis of paraffin-embedded human oophoroma. 1, Antibody was diluted at 1:200 (4° overnight). 2, STJ94263



Immunofluorescence analysis of HeLa cells using SIN3B Antibody. The picture on the right is blocked with the STJ94263