

Anti-MRPS35 antibody (211-260) (STJ94254)

GENERAL INFORMATION

Product Type	Primary antibodies
Applications	WB/IHC/IF/ELISA
Host / Source	Rabbit
Reactivity	Human/Rat/Mouse

PRODUCT PROPERTIES

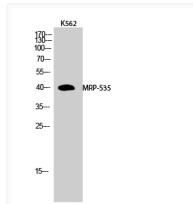
Clonality	Polyclonal
Concentration	1 mg/mL
Conjugation	Unconjugated
Purification	The antibody was affinity-purified from rabbit antiserum by affinity-chromatography using epitope-specific immunogen.
Dilution Range	WB 1:500-1:2000 IHC 1:100-1:300 ELISA 1:40000 IF 1:50-200
Formulation	Liquid in PBS containing 50% Glycerol, 0.5% BSA and 0.02% Sodium Azide.
Isotype	IgG
Molecular Weight	Observed: 40kD
Storage Instruction	Store at -20°C for up to 1 year from the date of receipt, and avoid repeat freeze-thaw cycles.

TARGET INFORMATION

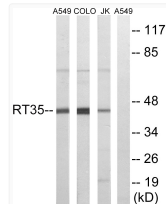
Gene ID	60488
Gene Symbol	MRPS35
UniProt ID	RT35_HUMAN
Immunogen Region	211-260
Specificity	MRP-S35 Polyclonal Antibody detects endogenous levels of MRP-S35 protein.

ADDITIONAL INFORMATION

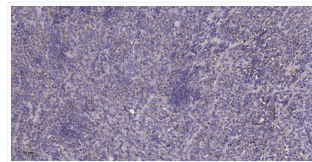
Note **STRICTLY FOR FURTHER SCIENTIFIC RESEARCH USE ONLY (RUO). MUST NOT TO BE USED IN DIAGNOSTIC OR THERAPEUTIC APPLICATIONS.**



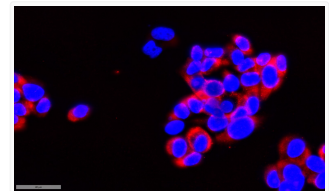
Western Blot analysis of K562 cells using MRP-S35 Polyclonal Antibody STJ94254



Western blot analysis of lysates from Jurkat, COLO, and A549 cells, using MRPS35 Antibody. The lane on the right is STJ94254



Immunohistochemical analysis of paraffin-embedded human colon cancer. 1, Antibody was diluted at 1:200 (4°C overnight). STJ94254



Immunofluorescence analysis of MCF7 cells. 1, Primary antibody was diluted at 1:100 (4°C overnight). 2, Goat Anti Rabbit STJ94254