

Anti-MRPL9 antibody (211-260) (STJ94238)

GENERAL INFORMATION

Product Type	Primary antibodies
Applications	WB/IHC
Host / Source	Rabbit
Reactivity	Human/Rat/Mouse

PRODUCT PROPERTIES

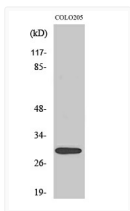
Clonality	Polyclonal
Concentration	1 mg/mL
Conjugation	Unconjugated
Purification	The antibody was affinity-purified from rabbit antiserum by affinity-chromatography using epitope-specific immunogen.
Dilution Range	WB 1:500-2000 IHC-p 1:50-300
Formulation	Liquid in PBS containing 50% Glycerol, 0.5% BSA and 0.02% Sodium Azide.
Isotype	IgG
Molecular Weight	Observed: 30kD
Storage Instruction	Store at -20°C for up to 1 year from the date of receipt, and avoid repeat freeze-thaw cycles.

TARGET INFORMATION

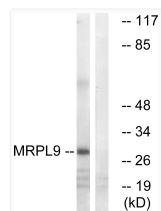
Gene ID	65005
Gene Symbol	MRPL9
UniProt ID	RM09_HUMAN
Immunogen Region	211-260
Specificity	MRP-L9 Polyclonal Antibody detects endogenous levels of MRP-L9 protein.

ADDITIONAL INFORMATION

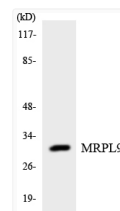
Note **STRICTLY FOR FURTHER SCIENTIFIC RESEARCH USE ONLY (RUO). MUST NOT TO BE USED IN DIAGNOSTIC OR THERAPEUTIC APPLICATIONS.**



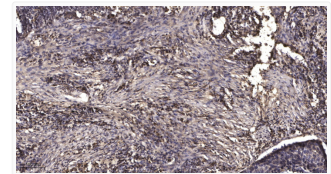
Western Blot analysis of various cells using MRPL9 Polyclonal Antibody STJ94238



Western blot analysis of lysates from COLO cells, using MRPL9 Antibody. The lane on the right is blocked with the STJ94238



Western blot analysis of the lysates from HUVEC cells using MRPL9 antibody, STJ94238



Immunohistochemical analysis of paraffin-embedded human squamous cell carcinoma of lung. 1, Antibody was diluted at STJ94238