

## Anti-MRPL52 antibody (71-120) (STJ94236)

### GENERAL INFORMATION

|               |                    |
|---------------|--------------------|
| Product Type  | Primary antibodies |
| Applications  | IHC/IF/ELISA       |
| Host / Source | Rabbit             |
| Reactivity    | Human/Rat/Mouse    |

### PRODUCT PROPERTIES

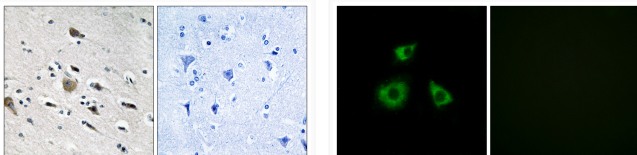
|                     |   |
|---------------------|---|
| Clonality           | Polyclonal  |
| Concentration       | 1 mg/mL   |
| Conjugation         | Unconjugated  |
| Purification        | The antibody was affinity-purified from rabbit antiserum by affinity-chromatography using epitope-specific immunogen. |
| Dilution Range      | IHC 1:100-1:300<br>IF 1:200-1:1000<br>ELISA 1:5000  |
| Formulation         | Liquid in PBS containing 50% Glycerol, 0.5% BSA and 0.02% Sodium Azide.   |
| Isotype             | IgG   |
| Molecular Weight    | Calculated: 14kD  |
| Storage Instruction | Store at -20°C for up to 1 year from the date of receipt, and avoid repeat freeze-thaw cycles.                        |

### TARGET INFORMATION

|                  |   |
|------------------|---|
| Gene ID          | <a href="#">122704</a>  |
| Gene Symbol      | <a href="#">MRPL52</a>  |
| UniProt ID       | <a href="#">RM52_HUMAN</a>  |
| Immunogen Region | 71-120  |
| Specificity      | MRP-L52 Polyclonal Antibody detects endogenous levels of MRP-L52 protein. |

### ADDITIONAL INFORMATION

Note STRICTLY FOR FURTHER SCIENTIFIC RESEARCH USE ONLY (RUO). MUST NOT TO BE USED IN DIAGNOSTIC OR THERAPEUTIC APPLICATIONS.



Immunohistochemistry analysis of paraffin-embedded human brain tissue, using MRPL52 Antibody. The picture on the right is blocked with the synthesized peptide.

Immunofluorescence analysis of HUVEC cells, using MRPL52 Antibody. The picture on the right is blocked with the synthesized peptide.