

## Anti-MRPL47 antibody (191-240) (STJ94231)

### GENERAL INFORMATION

Product Type	Primary antibodies
Applications	WB/IHC
Host / Source	Rabbit
Reactivity	Human/Rat/Mouse

### PRODUCT PROPERTIES

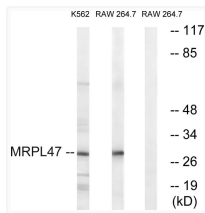
Clonality	Polyclonal
Concentration	1 mg/mL
Conjugation	Unconjugated
Purification	The antibody was affinity-purified from rabbit antiserum by affinity-chromatography using epitope-specific immunogen.
Dilution Range	WB 1:500-2000 IHC-p 1:50-300
Formulation	Liquid in PBS containing 50% Glycerol, 0.5% BSA and 0.02% Sodium Azide.
Isotype	IgG
Molecular Weight	Observed: 30kD
Storage Instruction	Store at -20°C for up to 1 year from the date of receipt, and avoid repeat freeze-thaw cycles.

### TARGET INFORMATION

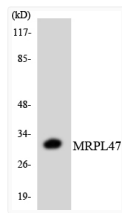
Gene ID	<a href="#">57129</a>
Gene Symbol	<a href="#">MRPL47</a>
UniProt ID	<a href="#">RM47_HUMAN</a>
Immunogen Region	191-240
Specificity	MRP-L47 Polyclonal Antibody detects endogenous levels of MRP-L47 protein.

### ADDITIONAL INFORMATION

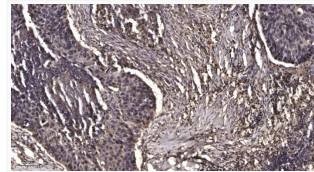
Note STRICTLY FOR FURTHER SCIENTIFIC RESEARCH USE ONLY (RUO). MUST NOT TO BE USED IN DIAGNOSTIC OR THERAPEUTIC APPLICATIONS.



Western blot analysis of lysates from RAW264.7 and K562 cells, using MRPL47 Antibody. The lane on the right was blocked STJ94231



Western blot analysis of the lysates from 293 cells using MRPL47 antibody. STJ94231



Immunohistochemical analysis of paraffin-embedded human squamous cell carcinoma of lung. 1, Antibody was diluted at STJ94231